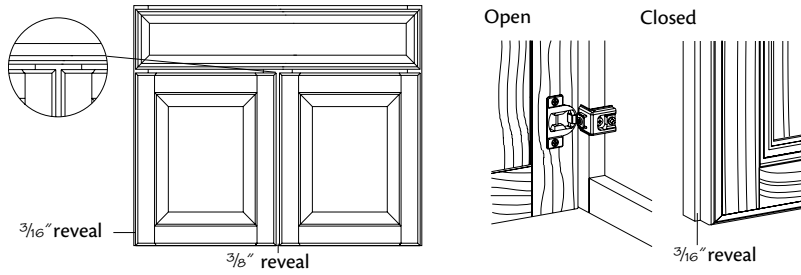
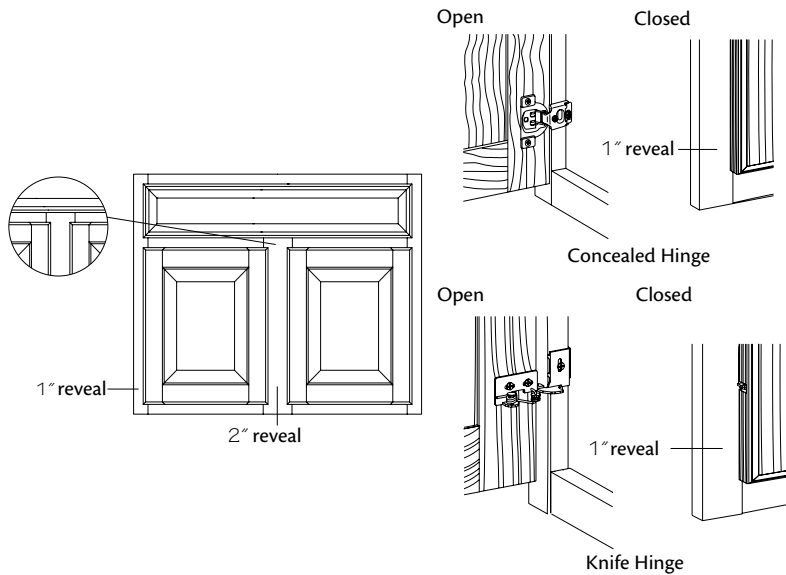


### Full Overlay–Concealed Hinges



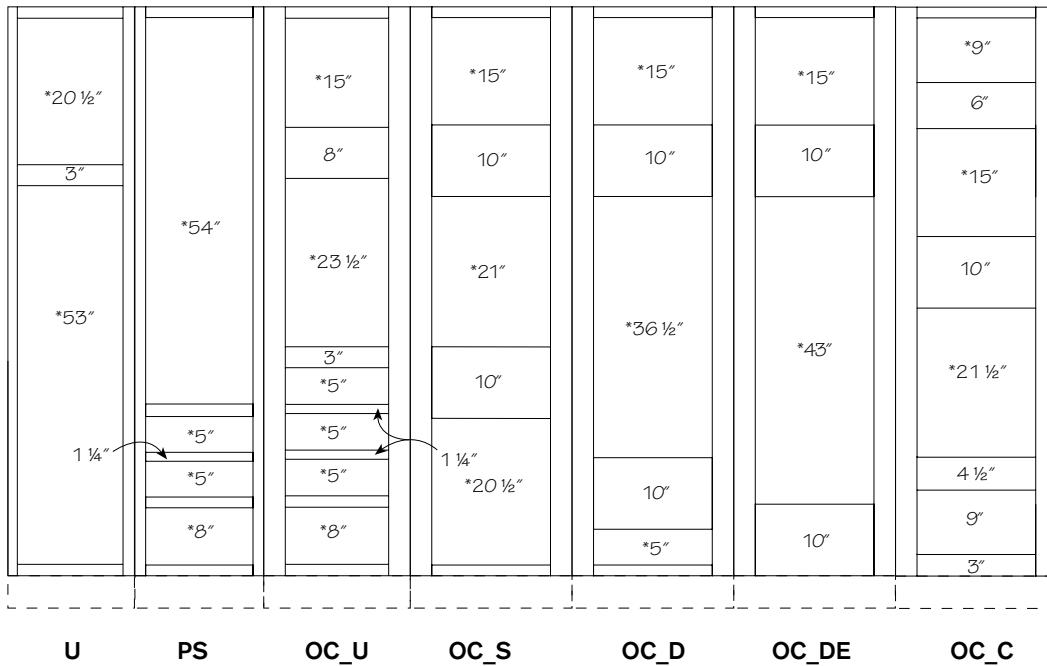
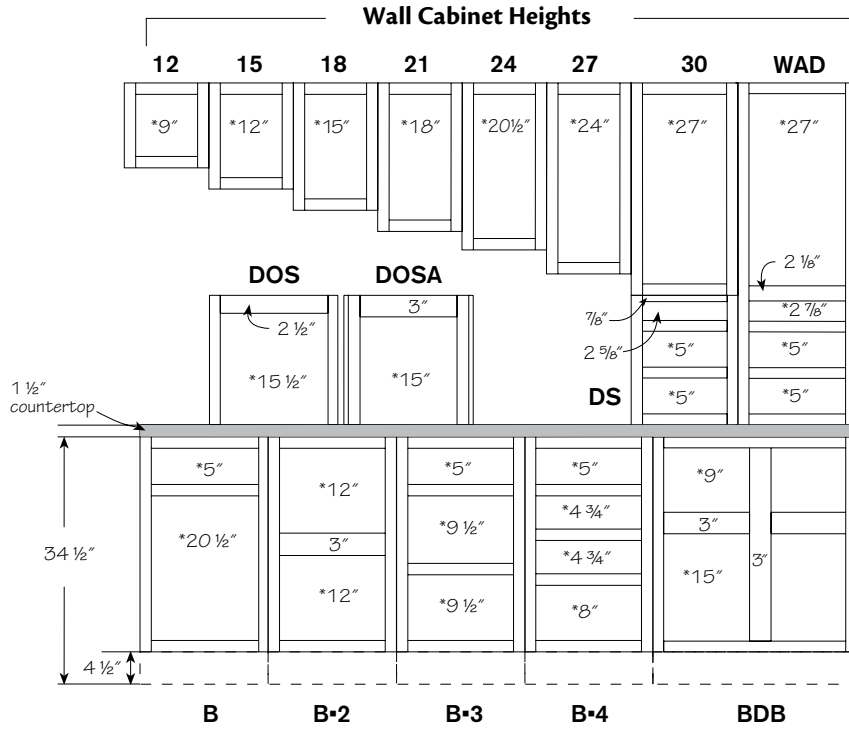
- Full Overlay doors leave  $\frac{3}{8}$ " of the cabinet's face frame exposed between doors
- The reveals shown here may vary slightly on some cabinets due to actual door/drawer front sizes used. Refer to the replacement door and drawer section of this book for actual door/drawer sizes for specific cabinets.
- Self-closing, concealed, wrap-around adjustable hinges with lifetime guarantee
- Six-way adjustable hinge

### $\frac{1}{2}$ " Overlay–Concealed or Knife Hinge



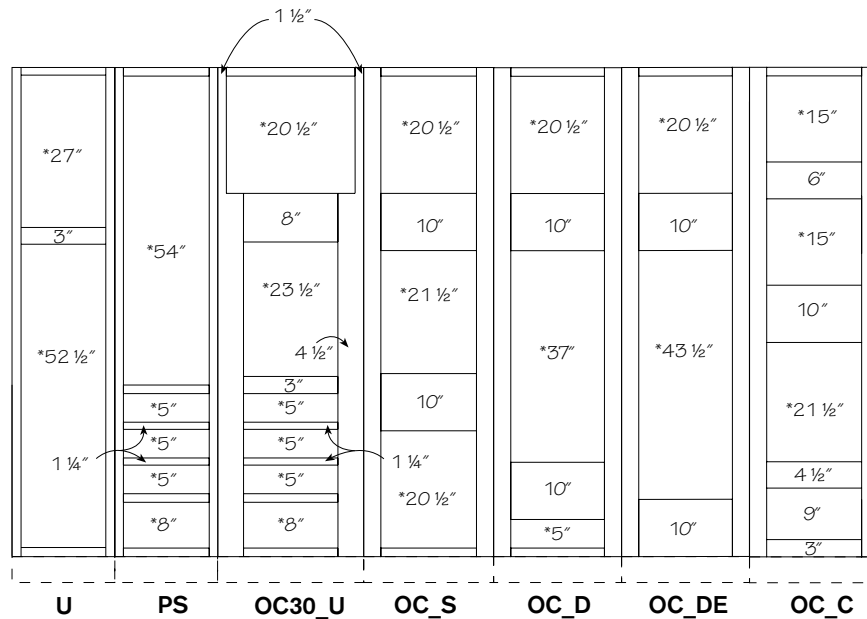
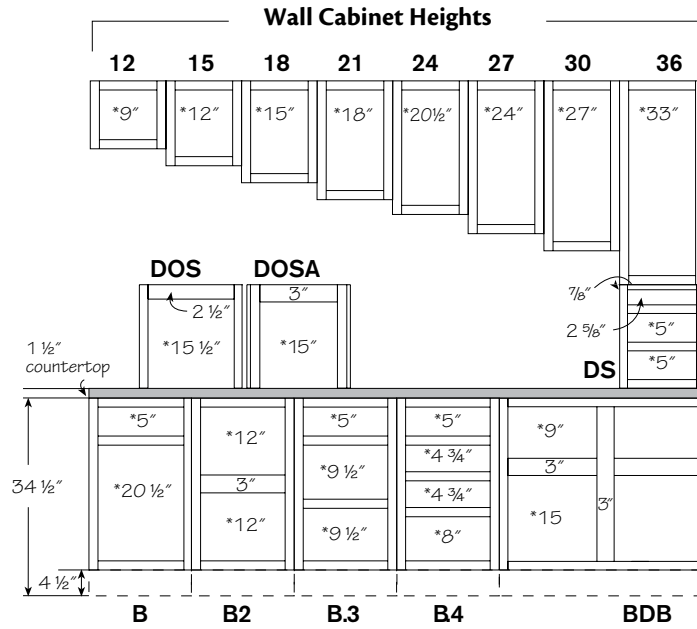
- $\frac{1}{2}$ " overlay doors leave 2" of the cabinet's face frame exposed between doors
- The reveals shown here may vary slightly on some cabinets due to actual door/drawer front sizes used. Refer to the replacement door and drawer section of this book for actual door/drawer sizes for specific cabinets.
- Self-closing, concealed, wrap-around adjustable or knife hinges with lifetime guarantee
- Six-way adjustable concealed hinge is standard on  $\frac{1}{2}$ " door styles
- Knife hinges are **not** available on any full overlay door styles

## 84" H Frame Dimensions



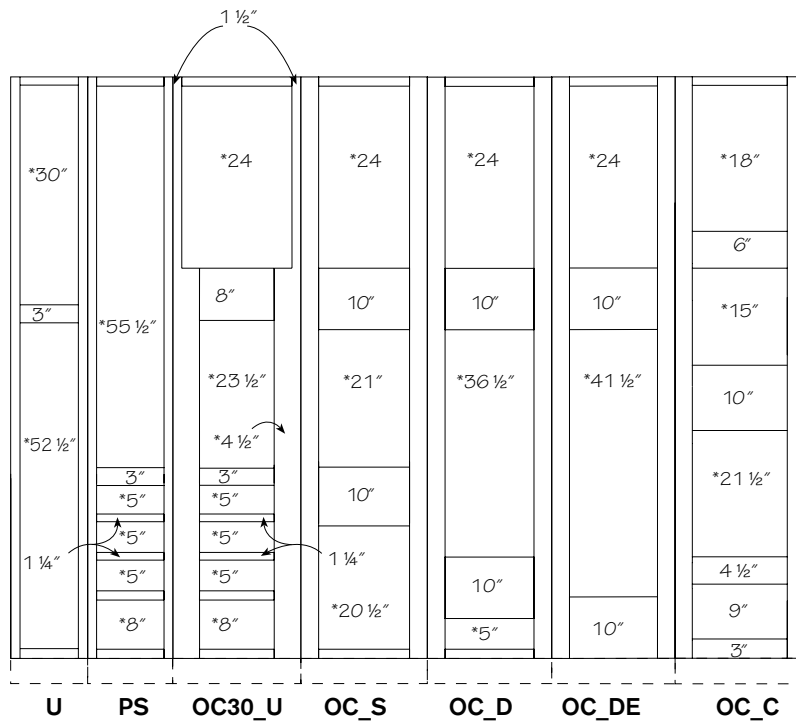
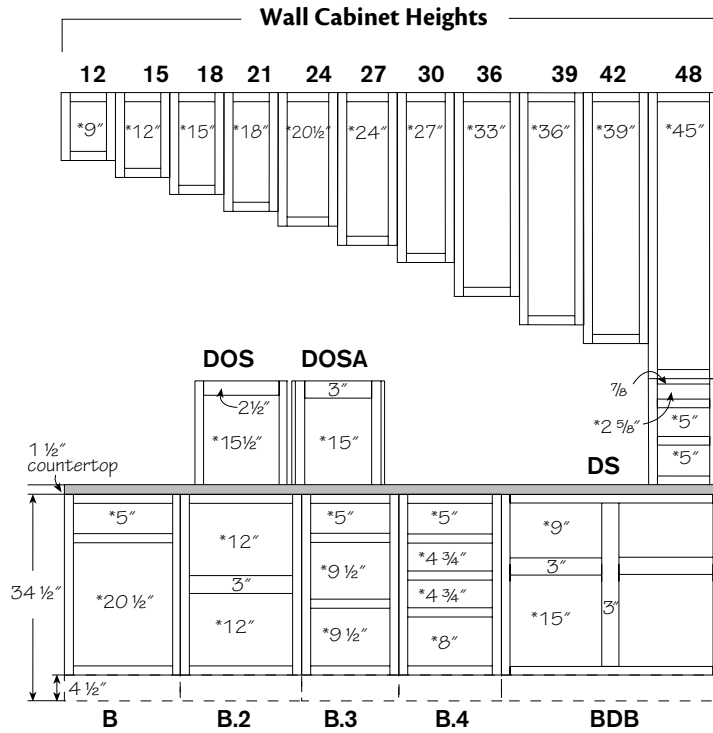
- Unless otherwise noted, all stiles and rails are 1 1/2"
- 3" vertical stiles divide double door cabinets over 36" wide
- Unless noted, oven cabinets have 3" vertical stiles
- Opening sizes are preceded by an asterisk (\*)
- Toe kick depth is 3 1/8"

## 90" H Frame Dimension



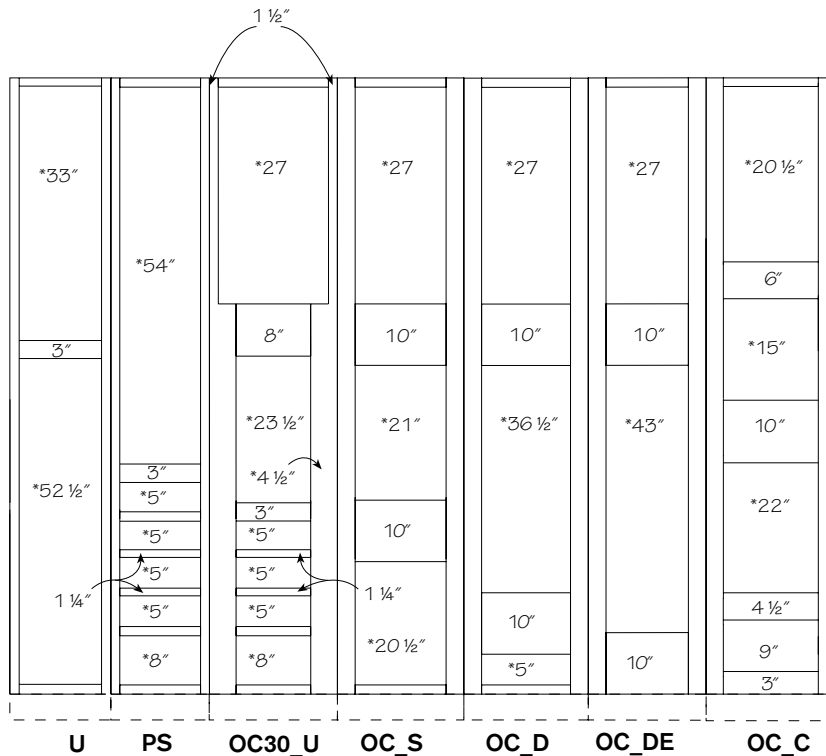
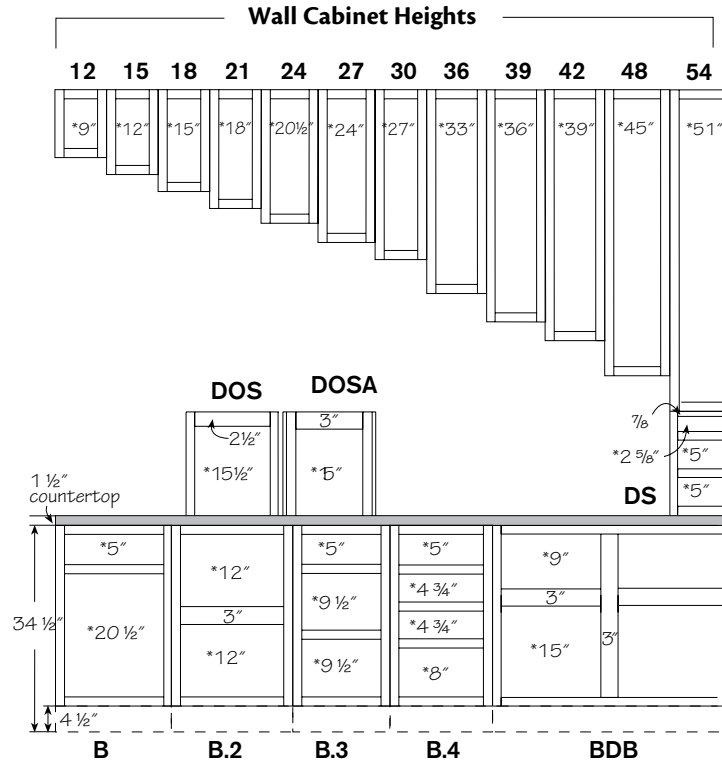
- Unless otherwise noted, all stiles and rails are 1 1/2"
- 3" vertical stiles divide double door cabinets over 36" wide
- Unless noted, oven cabinets have 3" vertical stiles
- Opening sizes are preceded by an asterisk (\*)
- Toe kick depth is 3 1/8"

## 93" H Frame Dimension



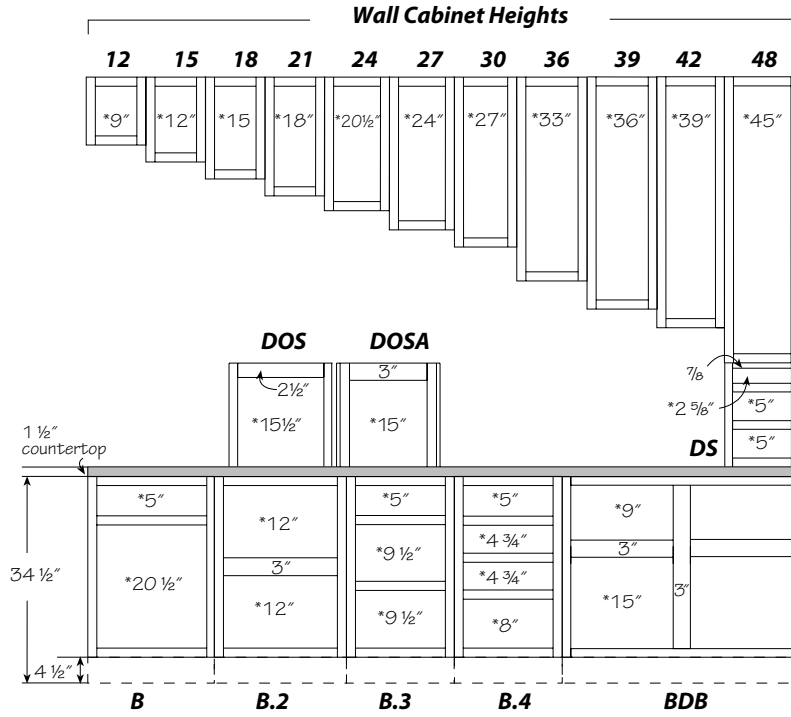
- Unless otherwise noted, all stiles and rails are 1 1/2"
- 3" vertical stiles divide double door cabinets over 36" wide
- Unless noted, oven cabinets have 3" vertical stiles
- Opening sizes are preceded by an asterisk (\*)
- Toe kick depth is 3 1/8"

## 96" H Frame Dimensions



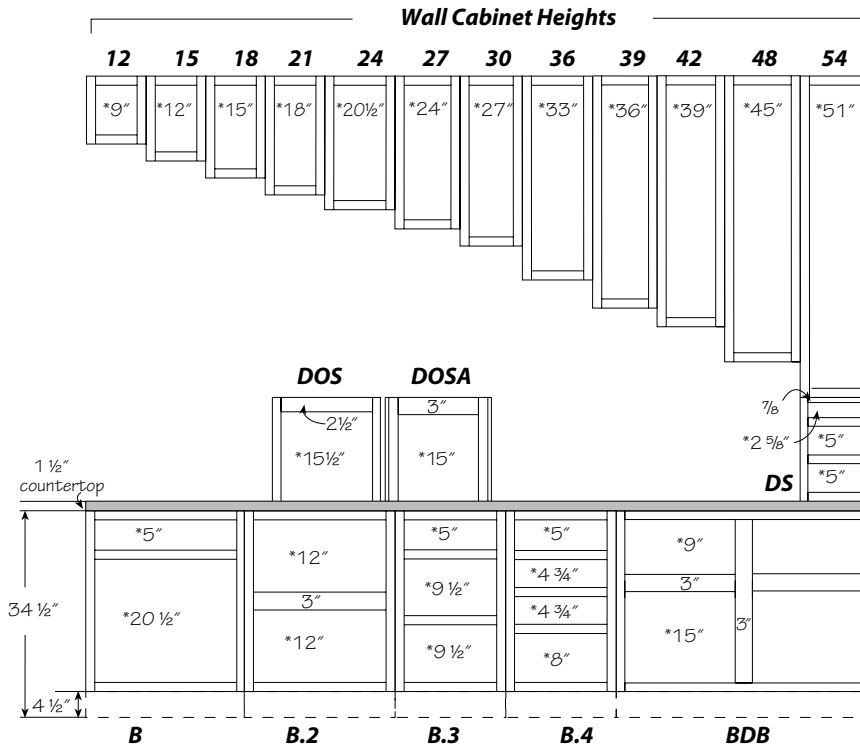
- Unless otherwise noted, all stiles and rails are 1 1/2"
- 3" vertical stiles divide double door cabinets over 36" wide
- Unless noted, oven cabinets have 3" vertical stiles
- Opening sizes are preceded by an asterisk (\*)
- Toe kick depth is 3 1/8"

### 102" H Frame Dimension



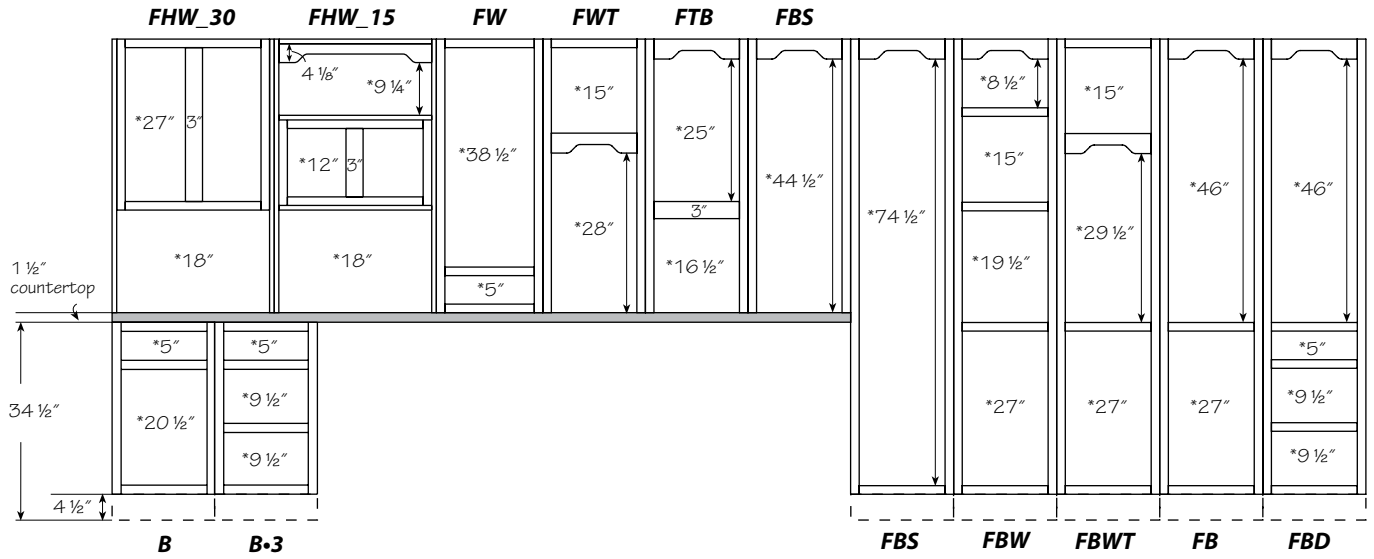
- Unless otherwise noted, all stiles and rails are 1 1/2"
- 3" vertical stiles divide double door cabinets over 36" wide
- Unless noted, oven cabinets have 3" vertical stiles
- Opening sizes are preceded by an asterisk (\*)
- Toe kick depth is 3 1/8"

### 108" H Frame Dimension



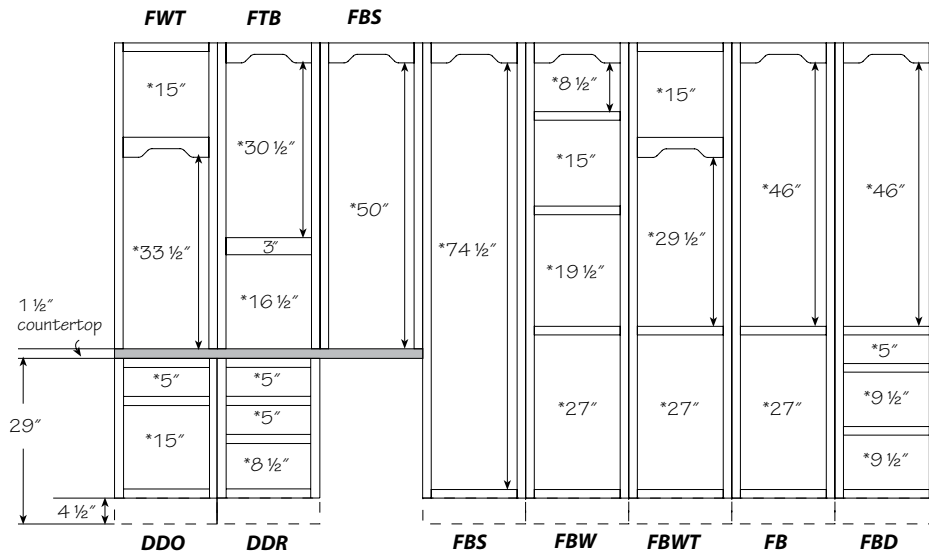
- Unless otherwise noted, all stiles and rails are 1 1/2"
- 3" vertical stiles divide double door cabinets over 36" wide
- Unless noted, oven cabinets have 3" vertical stiles
- Opening sizes are preceded by an asterisk (\*)
- Toe kick depth is 3 1/8"

### 84" H Furniture Frame Dimensions–Base



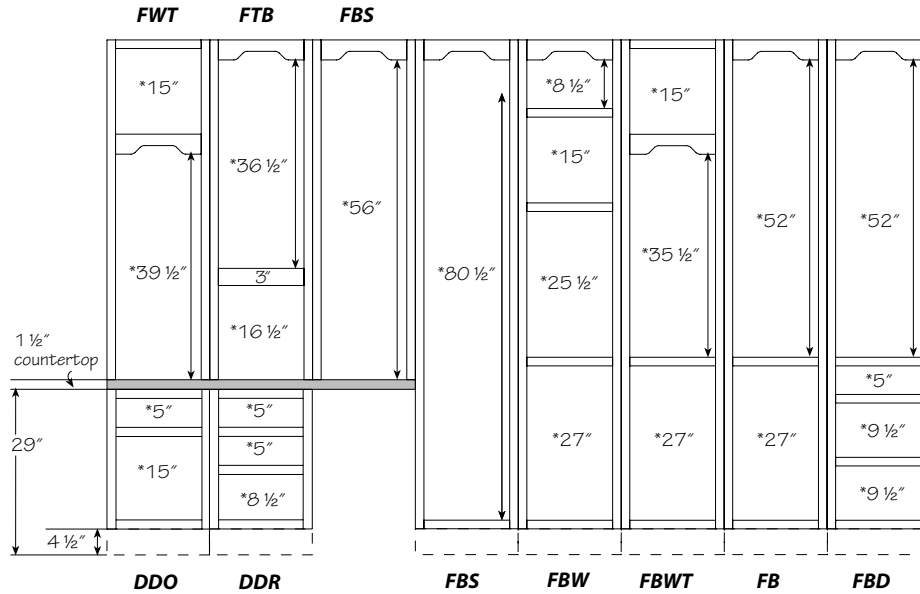
- Unless otherwise noted, all stiles and rails are 1 1/2"
- 3" vertical stiles divide double door cabinets over 36" wide
- Unless noted, all furniture valances are 3 1/2" high
- Opening sizes are preceded by an asterisk (\*)
- Toe kick depth is 3 1/8"

### 84" H Furniture Frame Dimensions–Desk



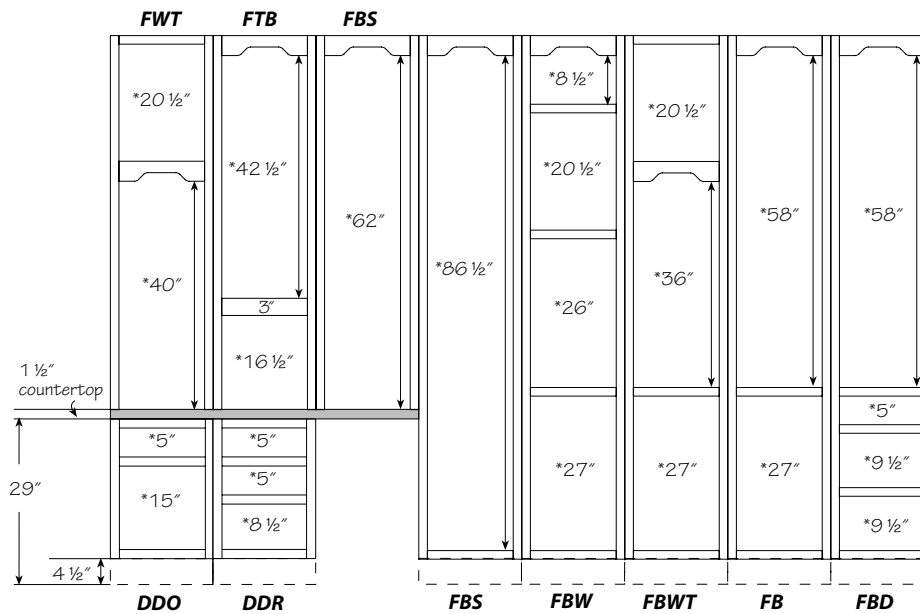
- Unless otherwise noted, all stiles and rails are 1 1/2"
- 3" vertical stiles divide double door cabinets over 36" wide
- Unless noted, all furniture valances are 3 1/2" high
- Opening sizes are preceded by an asterisk (\*)
- Toe kick depth is 3 1/8"

## 90" H Furniture Frame Dimensions



- Unless otherwise noted, all stiles and rails are 1 1/2"
- 3" vertical stiles divide double door cabinets over 36" wide
- Unless noted, all furniture valances are 3 1/2" high
- Opening sizes are preceded by an asterisk (\*)
- Toe kick depth is 3 1/8"

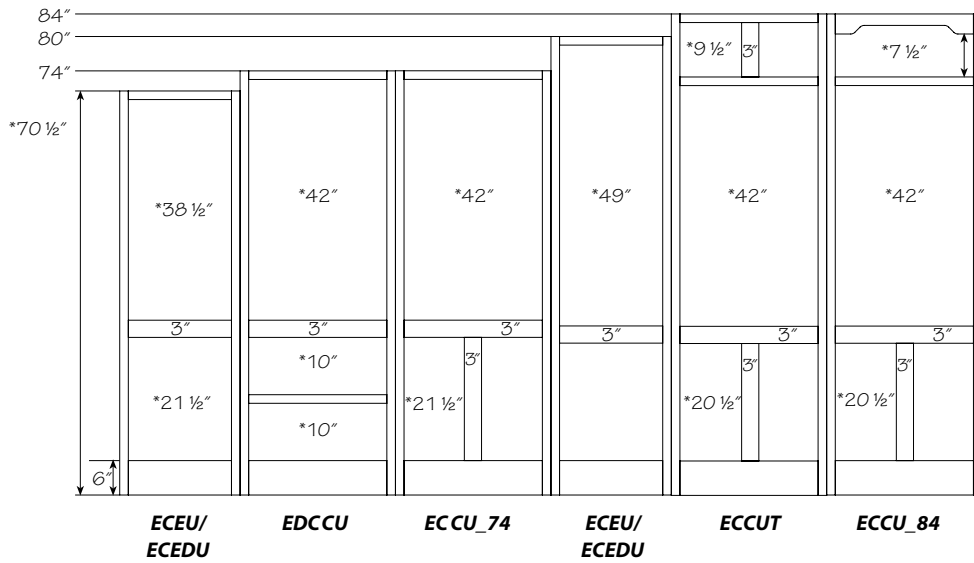
## 96" H Furniture Frame Dimensions



- Unless otherwise noted, all stiles and rails are 1 1/2"
- 3" vertical stiles divide double door cabinets over 36" wide
- Unless noted, all furniture valances are 3 1/2" high
- Opening sizes are preceded by an asterisk (\*)
- Toe kick depth is 3 1/8"



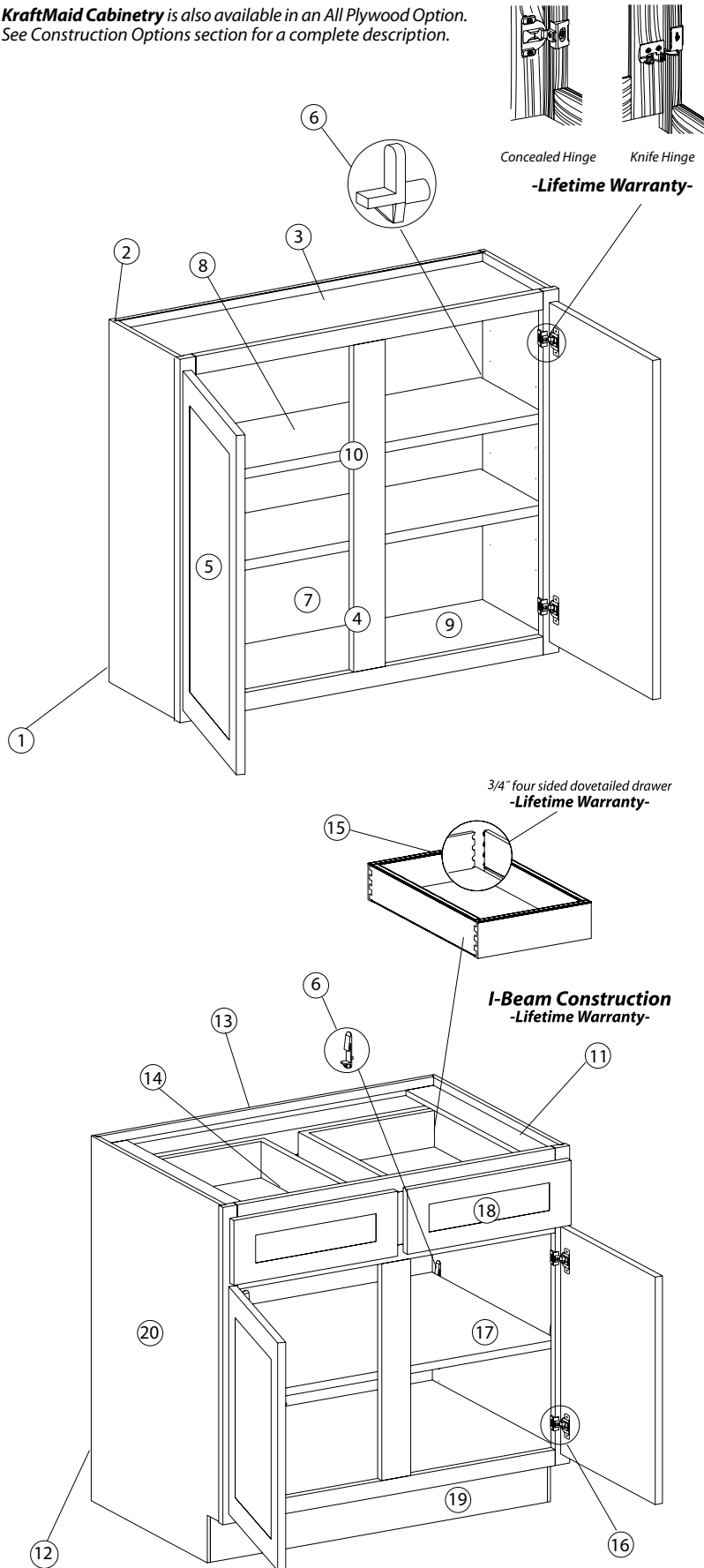
## Entertainment Frame Dimensions



- Unless otherwise noted, all stiles and rails are 1 1/2"
- 3" vertical stiles divide double door cabinets over 36" wide
- Unless noted, all furniture valances are 3 1/2" high
- Opening sizes are preceded by an asterisk (\*)
- Toe kick depth is 3 1/8"

## Cabinet Specifications

**KraftMaid Cabinetry** is also available in an All Plywood Option. See Construction Options section for a complete description.



- (1) Viraguard clad back panel
- (2) 1/2" wood concealed hanging rail
- (3) 1/2" Natural Birch Viraguard clad ceiling panel
- (4) 3/4" solid Birch, Cherry, Hickory, Maple and Oak front frame constructed using industrial grade glue and hardened steel fasteners. Front frame species complements selected door style.
- (5) Extensive and unique door style and wood species selection in Birch, Cherry, Hickory, Maple and Oak. Solid and wood veneer construction available. Also available in laminate.
- (6) Satin chrome shelf rests for all kitchen wall and furniture cabinets. Easily adjustable positive locking shelf clips for all base, tall and vanity cabinets.
- (7) Natural Birch Viraguard interior
- (8) 3/4" fully adjustable Natural Birch Viraguard clad shelving standard feature in wall, base and tall cabinets
- (9) 1/2" Natural Birch Viraguard clad cabinet bottom
- (10) Fourteen step Durakraft furniture process featuring hand-wiped stain with one of the finest wood finishes available in the cabinet industry
- (11) Full-depth I-beam braces provide stability and convenient anchor points for countertop
- (12) 3/8" Natural Birch Viraguard clad base back panel
- (13) 3/4" solid wood base installation rail
- (14) Standard drawer runner suspension system with 75 pound load capacity, full extension undermount runner with integrated drawer buffer.
- (15) Lifetime warranted, 3/4" full-depth solid wood dovetailed drawer featuring four sided construction and 3/16" plywood bottom
- (16) Self-closing, concealed, wrap-around adjustable or knife hinges with lifetime guarantee
- (17) Full-depth, fully adjustable 3/4" Natural Birch Viraguard clad shelving
- (18) Drawer heads are solid hardwood or laminate to complement each door style
- (19) Fully closed toe space area
- (20) 1/2" side panels with woodgrain Viraguard interior and matching Birch, Cherry, Cream, Hickory, Maple, Oak or White exterior. Also available with optional 1/2" or 3/4" plywood end panels. Woodgrain Viraguard interior or wood veneer interior available. Unless noted, plain sawn end panels will be supplied for quartersawn door styles.

Viraguard is the trade name of our printed woodgrain laminate  
Material thickness dimensions may be nominal based on lumber industry standards