

Wall Cabinets

Construction Options and Modifications

- --- Available with an upcharge
- ☆ --- Available with exceptions
- ◆ --- Included as standard
- (Blank) - Not available



Look for the Harmony® storage solutions symbol

Note: Standard wall cabinet box depth is 12" unless stated otherwise. Add door thickness with bumpers for total depth.

Caution: Installation of a wall cabinet 30" or wider requires additional support, such as attachment to a soffit, or support from below. Failure to provide additional support could result in collapse of the cabinet, serious personal injury, or property damage. Damage relating to failure to provide additional support is not covered by the warranty.

WR	30	12
code	width	height

Any wall cabinet over 24" wide or 30" high with a depth greater than 12" and/or butt doors must be installed between two cabinets, a cabinet and a wall, or supported from below.

Material dimensions may be nominal based on lumber industry standards.

Specifications subject to change without notice.

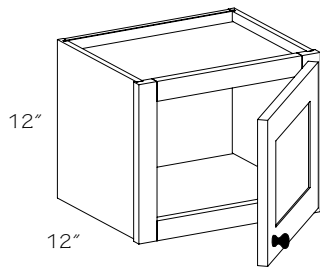
- PE --- Plywood Ends
- APC --- All Plywood Construction
- APFC --- All Plywood Furniture Construction
- DE --- Integrated Decorative End
- FPEB --- Furniture Plywood Ends
- GD --- Glass Doors
- ID --- Increased Depth
- MI --- Matching Interior
- RD --- Reduced Depth
- TWR --- Top Wide Rail
- XS --- Extended Stile
- XSG --- Integrated Extended Stile

Wall Single Door 12" H

(price book pg. D2)

Specify R or L

- No shelf



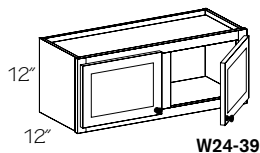
- W1212 R or L**
- W1512 R or L**
- W1812 R or L**
- W2112 R or L**

- PE
- APC
- APFC
- DE
- FPEB
- GD
- ID
- MI
- RD
- TWR
- XS
- XSG

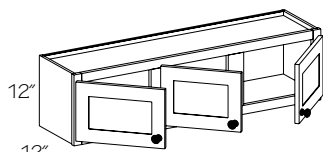
Wall Double Door 12" H

(price book pg. D2)

- No shelf
- Any wall cabinet over 24" wide or 30" high with a depth greater than 12" and/or with butt doors must be installed between two (2) cabinets, a cabinet and a wall or supported from below



W24-39



W4812

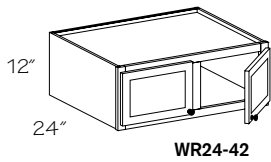
- W2412 BUTT**
- W2712 (Butt)**
- W3012**
- W3012 BUTT**
- W3312**
- W3312 BUTT**
- W3612**
- W3612 BUTT**

- ☆ **W3912**
- ☆ **W4812**
- ☆ **Not available in Increased Depth (ID)**

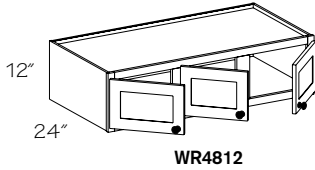
Color coding indicates new product, size or code

- PE
- APC
- APFC
- DE
- FPEB
- GD
- ☆ ID
- MI
- RD
- TWR
- XS
- XSG

Caution! Installation of a wall cabinet 30" or wider requires additional support, such as attachment to a soffit, or support from below.



WR24-42



WR4812

Wall Refrigerator 24" Deep 12" H

(price book pg. D2)

- WR2412 BUTT
- WR2712 (Butt)
- WR3012
- WR3012 BUTT
- WR3312
- WR3312 BUTT
- WR3612
- WR3612 BUTT
- WR3912
- WR4212
- WR4812

- No shelf
- Additional support required



When designing a built-in refrigerator area, remember that many side by side refrigerators measure up to 36" wide. If you have the extra space, it is recommended to use at least a 1" filler with a 36" wide wall refrigerator cabinet to assure clearance for the appliance. Also, verify the height of the appliance to make sure you are using the correct wall refrigerator cabinet.

- PE
- APC
- APFC
- DE
- FPEB
- GD
- ID
- MI
- RD
- TWR
- XS
- XSG

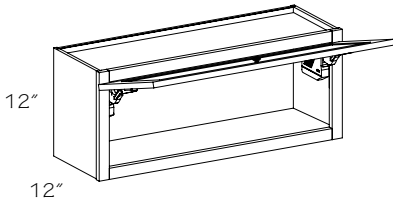
Color coding indicates new product, size or code

New

Wall Top Hinge Cabinet 12" H

(price book pg. D2)

- WTHG1512
- WTHG2412
- WTHG3012
- WTHG3612



Color coding indicates new product, size or code

- No shelf
- **Note:** Square doors will be supplied on this cabinet when ordered in arched door styles
- Prep for Glass (DRS•PREP) **not** available
- ☆ **Not** available with Crossroads, Moire and Vineyard glass inserts. Antiquity glass insert **not** available on 36" wide cabinet.
- ☆ **Not** available with mullion glass doors
- ☆ **Not** available with camed glass doors

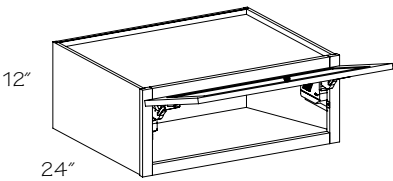
- PE
- APC
- APFC
- DE
- FPEB
- ☆ GD
- ID
- MI
- RD
- TWR
- XS
- XSG

New

Wall Refrigerator Top Hinge 24" Deep 12" H

(price book pg. D2)

- WRTHG3012
- WRTHG3612



Color coding indicates new product, size or code

- No shelf
- **Note:** Square doors will be supplied on this cabinet when ordered in arched door styles
- Prep for Glass (DRS•PREP) **not** available
- ☆ Minimum Reduced Depth (RD) is 12"
- ☆ **Not** available with Crossroads, Moire and Vineyard glass inserts. Antiquity glass insert **not** available on 36" wide cabinet.
- ☆ **Not** available with mullion glass doors
- ☆ **Not** available with camed glass doors

- PE
- APC
- APFC
- DE
- FPEB
- ☆ GD
- ID
- MI
- ☆ RD
- TWR
- XS
- XSG

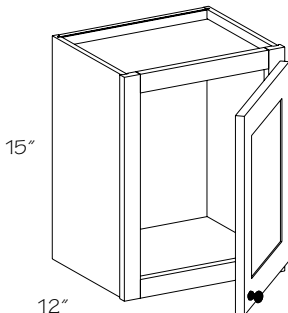
Wall Single Door 15" H

(price book pg. D2)

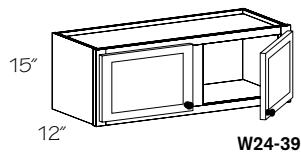
Specify R or L

- W1215 R or L
- W1515 R or L
- W1815 R or L
- W2115 R or L

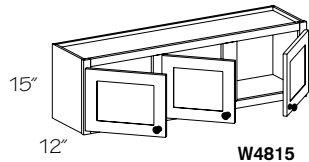
- No shelf



- PE
- APC
- APFC
- DE
- FPEB
- GD
- ID
- MI
- RD
- TWR
- XS
- XSG



W24-39



W4815

Wall Double Door 15" H

(price book pg. D4)

W2415 BUTT

W2715 (Butt)

W3015

W3015 BUTT

W3315

W3315 BUTT

W3615

W3615 BUTT

☆ **W3915**

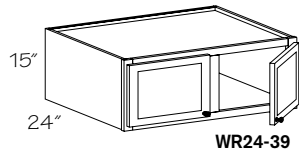
☆ **W4815**

☆ **Not** available in Increased Depth (ID)

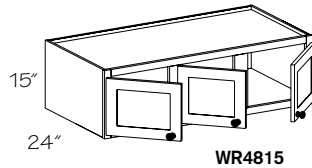
Color coding indicates new product, size or code

- No shelf
- Any wall cabinet over 24" wide or 30" high with a depth greater than 12" and/or with butt doors must be installed between two (2) cabinets, a cabinet and a wall or supported from below

●	PE
●	APC
●	APFC
●	DE
●	FPEB
●	GD
☆	ID
●	MI
●	RD
●	TWR
●	XS
●	XSG



WR24-39



WR4815

Wall Refrigerator 24" Deep 15" H

(price book pg. D4)

WR2415 BUTT

WR2715 (Butt)

WR3015

WR3015 BUTT

WR3315

WR3315 BUTT

WR3615

WR3615 BUTT

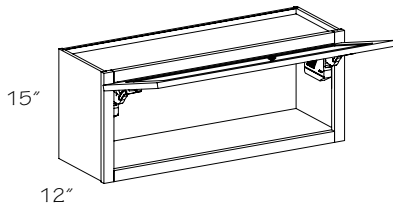
WR3915

WR4815

Color coding indicates new product, size or code

- No shelf
- Additional support required

●	PE
●	APC
●	APFC
●	DE
●	FPEB
●	GD
●	ID
●	MI
●	RD
●	TWR
●	XS
●	XSG



15"

12"

Wall Top Hinge Cabinet 15" H

(price book pg. D4)

WTHG1515

WTHG2415

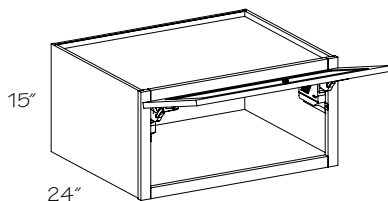
WTHG3015

WTHG3615

Color coding indicates new product, size or code

- No shelf
- **Note:** Square doors will be supplied on this cabinet when ordered in arched door styles
- Prep for Glass (DRS•PREP) **not** available
- ☆ **Not** available with Crossroads, Moire and Vineyard glass inserts. Antiquity glass insert **not** available on 36" wide cabinet.
- ☆ **Not** available with mullion glass doors
- ☆ **Not** available with camed glass doors

●	PE
●	APC
●	APFC
●	DE
●	FPEB
☆	GD
●	ID
●	MI
●	RD
●	TWR
●	XS
●	XSG



15"

24"

Wall Refrigerator Top Hinge 24" Deep 15" H

(price book pg. D4)

WRTHG3015

WRTHG3615

Color coding indicates new product, size or code

- No shelf
- **Note:** Square doors will be supplied on this cabinet when ordered in arched door styles
- Prep for Glass (DRS•PREP) **not** available
- ☆ Minimum Reduced Depth (RD) is 12"
- ☆ **Not** available with Crossroads, Moire and Vineyard glass inserts. Antiquity glass insert **not** available on 36" wide cabinet.
- ☆ **Not** available with mullion glass doors
- ☆ **Not** available with camed glass doors

●	PE
●	APC
●	APFC
●	DE
●	FPEB
☆	GD
●	ID
●	MI
☆	RD
●	TWR
●	XS
●	XSG

Caution! Installation of a wall cabinet 30" or wider requires additional support, such as attachment to a soffit, or support from below.

Wall Single Door 18" H

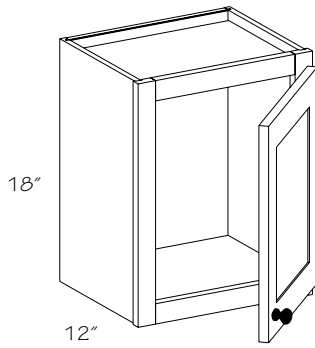
(price book pg. D4)

Specify R or L

- W1218 R or L**
- W1518 R or L**
- W1818 R or L**
- W2118 R or L**

- No shelf

- PE
- APC
- APFC
- DE
- FPEB
- GD
- ID
- MI
- RD
- TWR
- XS
- XSG



Wall Double Door 18" H

(price book pg. D6)

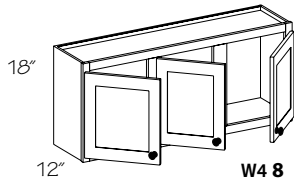
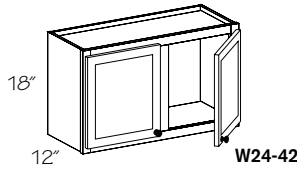
- W2418 BUTT**
- W2718 (Butt)**
- W3018**
- W3018 BUTT**
- W3318**
- W3318 BUTT**
- W3618**
- W3618 BUTT**

- ☆ **W3918**
- ☆ **W4218**
- ☆ **W4818**
- ☆ **Not available in Increased Depth (ID)**

Color coding indicates new product, size or code

- No shelf
- Any wall cabinet over 24" wide or 30" high with a depth greater than 12" and/or with butt doors must be installed between two (2) cabinets, a cabinet and a wall or supported from below

- PE
- APC
- APFC
- DE
- FPEB
- GD
- ☆ ID
- MI
- RD
- TWR
- XS
- XSG



Wall Refrigerator 24" Deep 18" H

(price book pg. D6)

- WR2418 BUTT**
- WR2718 (Butt)**
- WR3018**
- WR3018 BUTT**
- WR3318**
- WR3318 BUTT**
- WR3618**
- WR3618 BUTT**
- WR3918**
- WR4218**
- WR4818**

Color coding indicates new product, size or code

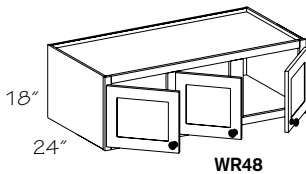
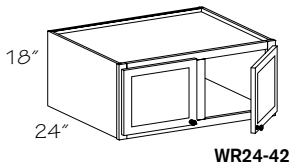
- Additional support required
- No shelf



Remember, a cabinet designated BUTT or (Butt) has no center stile.

When you see the word BUTT in all capitals, it must be included as part of your ordering nomenclature, a (Butt) in parentheses is for your information and isn't required on an order form.

- PE
- APC
- APFC
- DE
- FPEB
- GD
- ID
- MI
- RD
- TWR
- XS
- XSG



New

Wall Top Hinge Cabinet 18" H

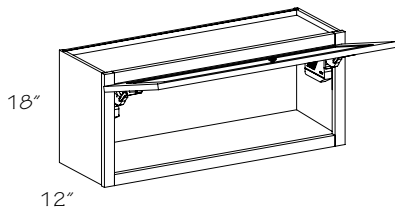
(price book pg. D6)

- WTHG1518**
- WTHG2418**
- WTHG3018**
- WTHG3618**

Color coding indicates new product, size or code

- No shelf
- **Note:** Square doors will be supplied on this cabinet when ordered in arched door styles
- Prep for Glass (DRS•PREP) **not** available
- ☆ **Not** available with Crossroads, Moire and Vineyard glass inserts. Antiquity glass insert **not** available on 36" wide cabinet.
- ☆ **Not** available with mullion glass doors
- ☆ **Not** available with camed glass doors

- PE
- APC
- APFC
- DE
- FPEB
- ☆ GD
- ID
- MI
- RD
- TWR
- XS
- XSG



New

Wall Refrigerator Top Hinge 24" Deep 18" H

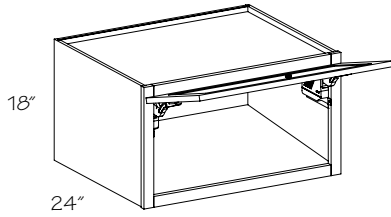
(price book pg. D6)

WRTHG3018

WRTHG3618

Color coding indicates new product, size or code

- No shelf
- **Note:** Square doors will be supplied on this cabinet when ordered in arched door styles
- Prep for Glass (DRS-PREP) **not** available
- ☆ Minimum Reduced Depth (RD) is 12"
- ☆ **Not** available with Crossroads, Moire and Vineyard glass inserts. Antiquity glass insert **not** available on 36" wide cabinet.
- ☆ **Not** available with mullion glass doors
- ☆ **Not** available with camed glass doors



- PE
- APC
- APFC
- DE
- FPFB
- ☆ GD
- ID
- MI
- ☆ RD
- TWR
- XS
- XSG

Wall Single Door 23 1/2" H

(price book pg. D6)

Specify R or L

W1224 R or L

W1524 R or L

W1824 R or L

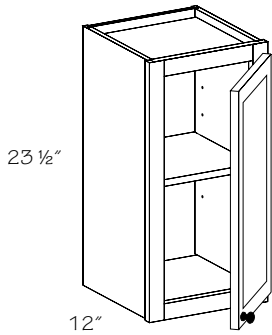
W2124 R or L

W2424 R or L

- One adjustable shelf



Remember, our 24" high wall cabinets are actually 23 1/2". When mounting a 6" Spice Drawer or Organizer underneath next to a 30" high wall cabinet, the overall height will be 29 1/2". To correct this, you can place a piece of Stack Molding (STM8) or a 1/2" filler between the 23 1/2" cabinet and the 6" cabinet.



- PE
- APC
- APFC
- DE
- FPFB
- GD
- ID
- MI
- RD
- TWR
- XS
- XSG

Wall Double Door 21" and 23 1/2" H

(price book pg. D8)

W3021

W3021 BUTT

W3321

W3321 BUTT

W3621

W3621 BUTT

W2424 BUTT

W2724 (Butt)

W3024

W3024 BUTT

W3324

W3324 BUTT

W3624

W3624 BUTT

☆ **W3924**

☆ **W4224**

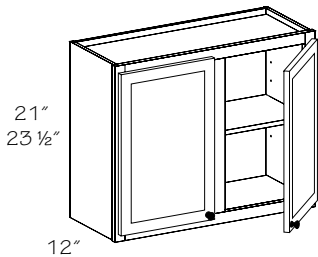
☆ **W4524**

☆ **W4824**

☆ **Not** available in Increased Depth (ID)

Color coding indicates new product, size or code

- One adjustable shelf
- Any wall cabinet over 24" wide or 30" high with a depth greater than 12" and/or with butt doors must be installed between two (2) cabinets, a cabinet and a wall or supported from below
- 30-36" wide wall cabinets with BUTT doors have wood veneer plywood shelves



- PE
- APC
- APFC
- DE
- FPFB
- GD
- ☆ ID
- MI
- RD
- TWR
- XS
- XSG

Wall Refrigerator 24" Deep 21" and 23 1/2" H

(price book pg. D8)

WR3021

WR3021 BUTT

WR3321

WR3321 BUTT

WR3621

WR3621 BUTT

WR2424 BUTT

WR2724 (Butt)

WR3024

WR3024 BUTT

WR3324

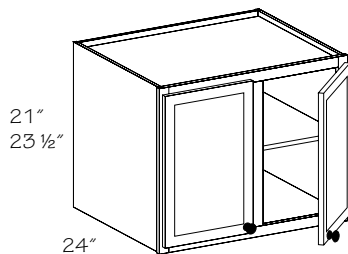
WR3324 BUTT

WR3624

WR3624 BUTT

WR3924

- Additional support required
- One adjustable shelf
- 30-36" wide wall cabinets with BUTT doors have wood veneer plywood shelves



Color coding indicates new product, size or code

- PE
- APC
- APFC
- DE
- FPFB
- GD
- ID
- MI
- RD
- ☆ TWR
- XS
- XSG

Caution! Installation of a wall cabinet 30" or wider requires additional support, such as attachment to a soffit, or support from below.

New

Wall Top Hinge Cabinet 21" and 23 1/2" H

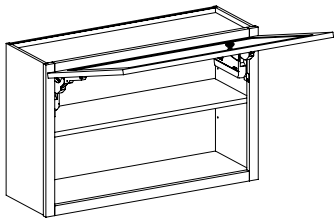
(price book pg. D8)

- WTHG3021
- WTHG3621
- WTHG1524
- WTHG2424
- WTHG3024
- WTHG3624

Color coding indicates new product, size or code

21"
23 1/2"

12"



- One adjustable shelf
- 30-36" wide wall cabinets have wood veneer plywood shelves
- **Note:** Square doors will be supplied on this cabinet when ordered in arched door styles
- Prep for Glass (DRS•PREP) **not** available
- ☆ **Not** available with Crossroads, Moire and Vineyard glass inserts. Antiquity glass insert **not** available on 36" wide cabinet.
- ☆ **Not** available with mullion glass doors
- ☆ **Not** available with camed glass doors

● PE
● APC
● APFC
DE
● FPEB
☆ GD
● ID
● MI
RD
TWR
● XS
XSG

New

Wall Refrigerator Top Hinge 24" Deep 21" H & 23 1/2" H

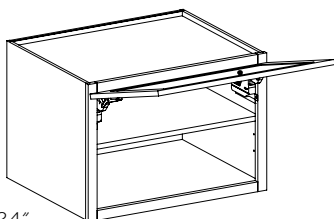
(price book pg. D8)

- WRTHG3021
- WRTHG3621
- WRTHG3024
- WRTHG3624

Color coding indicates new product, size or code

21"
23 1/2"

24"



- No shelf
- 30-36" wide wall cabinets have wood veneer plywood shelves
- **Note:** Square doors will be supplied on this cabinet when ordered in arched door styles
- Prep for Glass (DRS•PREP) **not** available
- ☆ Minimum Reduced Depth (RD) is 12"
- ☆ **Not** available with Crossroads, Moire and Vineyard glass inserts. Antiquity glass insert **not** available on 36" wide cabinet.
- ☆ **Not** available with mullion glass doors
- ☆ **Not** available with camed glass doors

● PE
● APC
● APFC
DE
● FPEB
☆ GD
ID
● MI
☆ RD
TWR
● XS
XSG

Wall Double Door 27" H

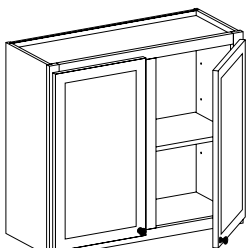
(price book pg. D10)

- W3027
- W3027 BUTT
- W3327
- W3327 BUTT
- W3627
- W3627 BUTT

Color coding indicates new product, size or code

27"

12"



- One adjustable shelf
- Any wall cabinet over 24" wide or 30" high with a depth greater than 12" and/or with butt doors must be installed between two (2) cabinets, a cabinet and a wall or supported from below

● PE
● APC
● APFC
DE
● FPEB
● GD
● ID
● MI
● RD
TWR
● XS
XSG

Wall Refrigerator 24" Deep 27" H

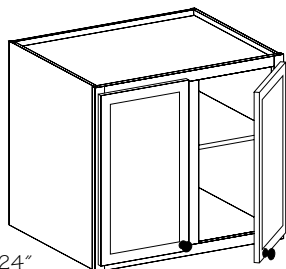
(price book pg. D10)

- WR3027
- WR3327
- WR3627

- Additional support required
- One adjustable shelf

27"

24"



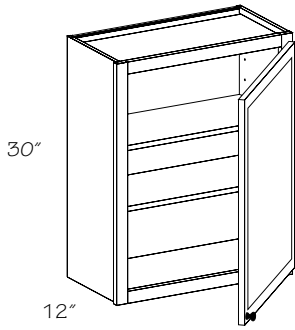
● PE
● APC
● APFC
DE
● FPEB
● GD
ID
● MI
● RD
TWR
● XS
XSG

Caution! Installation of a wall cabinet 30" or wider requires additional support, such as attachment to a soffit, or support from below.

Wall Single Door 30" H

(price book pg. D10)

Specify R or L



- ※ **W930 R or L**
- W1230 R or L**
- W1530 R or L**
- W1830 R or L**
- W2130 R or L**
- W2430 R or L**

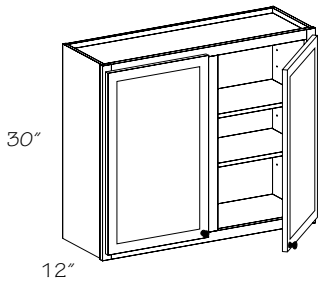
※ Doors are square except full overlay arch door styles. Evana Cathedral and Findlay Cathedral door styles will be square. Greenwich, Harlowe, Smithton and Vanderbilt doors will have a solid, recessed flat panel.

- Two adjustable shelves
- Any wall cabinet over 24" wide or 30" high with a depth greater than 12" and/or with butt doors must be installed between two (2) cabinets, a cabinet and a wall or supported from below

- PE
- APC
- APFC
- DE
- FPFB
- GD
- ID
- MI
- RD
- TWR
- XS
- XSG

Wall Double Door 30" H

(price book pg. D10)



- W2430 BUTT**
- W2730 (Butt)**
- W3030**
- W3030 BUTT**
- W3330**
- W3330 BUTT**
- W3630**
- W3630 BUTT**

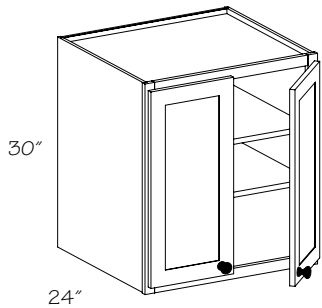
- ☆ **W3930**
- ☆ **W4230**
- ☆ **W4530**
- ☆ **W4830**
- ☆ **Not available in Increased Depth (ID)**

- Two adjustable shelves
- Any wall cabinet over 24" wide or 30" high with a depth greater than 12" and/or with butt doors must be installed between two (2) cabinets, a cabinet and a wall or supported from below
- 30-36" wide wall cabinets with BUTT doors have wood veneer plywood shelves

- PE
- APC
- APFC
- DE
- FPFB
- GD
- ☆ ID
- MI
- RD
- TWR
- XS
- XSG

Wall Refrigerator 24" Deep 30" H

(price book pg. D10)



- WR2430 BUTT**
- WR2730 (Butt)**
- WR3030**
- WR3330**
- WR3630**

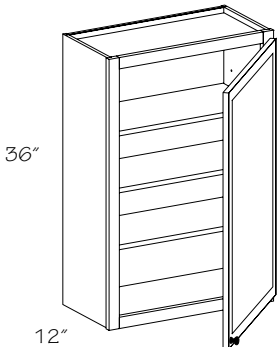
- Additional support required
- Two adjustable shelves

- PE
- APC
- APFC
- DE
- FPFB
- GD
- ID
- MI
- RD
- TWR
- XS
- XSG

Wall Single Door 36" H

(price book pg. D12)

Specify R or L



- ※ **W936 R or L**
- W1236 R or L**
- W1536 R or L**
- W1836 R or L**
- W2136 R or L**
- W2436 R or L**

※ Doors are square except full overlay arch door styles. Evana Cathedral and Findlay Cathedral door styles will be square. Greenwich, Harlowe, Smithton and Vanderbilt doors will have a solid, recessed flat panel.

- Three adjustable shelves
- Any wall cabinet over 24" wide or 30" high with a depth greater than 12" and/or with butt doors must be installed between two (2) cabinets, a cabinet and a wall or supported from below



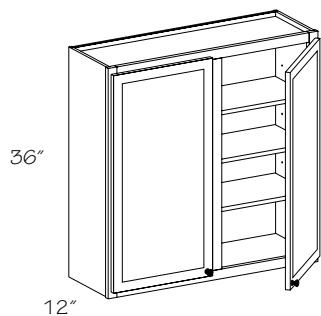
Remember, all 9" wide doors in 1/2" overlay will be square even on a cathedral door style. If a situation arises and you must use a 9" cabinet, one suggestion is to void the door and order the cabinet with matching interior and use it as a decorative open cabinet.

- PE
- APC
- APFC
- DE
- FPFB
- GD
- ID
- MI
- RD
- TWR
- XS
- XSG

Caution! Installation of a wall cabinet 30" or wider requires additional support, such as attachment to a soffit, or support from below.

Wall Double Door 36" H

(price book pg. D12)



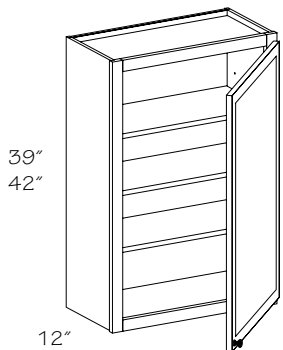
- W2436 BUTT
- W2736 (Butt)
- W3036
- W3036 BUTT
- W3336
- W3336 BUTT
- W3636
- W3636 BUTT

- Three adjustable shelves
- Any wall cabinet over 24" wide or 30" high with a depth greater than 12" and/or with butt doors must be installed between two (2) cabinets, a cabinet and a wall or supported from below
- 30-36" wide wall cabinets with BUTT doors have wood veneer plywood shelves

- PE
- APC
- APFC
- DE
- FPEB
- GD
- ID
- MI
- RD
- TWR
- XS
- XSG

Wall Single Door 39" and 42" H

(price book pg. D12)



- ※ W939 R or L
- W1239 R or L
- W1539 R or L
- W1839 R or L
- W2139 R or L
- W2439 R or L
- ※ W942 R or L
- W1242 R or L
- W1542 R or L
- W1842 R or L
- W2142 R or L
- W2442 R or L

- ※ Doors are square except full overlay arch door styles. Evana Cathedral and Findlay Cathedral door styles will be square. Greenwich, Harlowe, Smithton and Vanderbilt doors will have a solid, recessed flat panel.

- Three adjustable shelves
- Any wall cabinet over 24" wide or 30" high with a depth greater than 12" and/or with butt doors must be installed between two (2) cabinets, a cabinet and a wall or supported from below

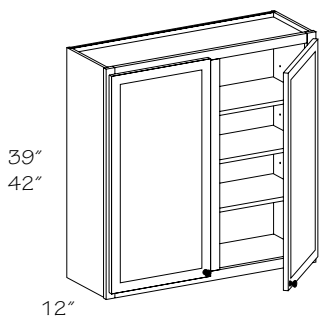


Remember, all 9" wide doors in 1/2" overlay will be square even on a cathedral door style. If a situation arises and you must use a 9" cabinet, one suggestion is to void the door and order the cabinet with matching interior and use it as a decorative open cabinet.

- PE
- APC
- APFC
- DE
- FPEB
- GD
- ID
- MI
- RD
- TWR
- XS
- XSG

Wall Double Door 39" and 42" H

(price book pg. D14)



- W2439 BUTT
- W2739 (Butt)
- W3039
- W3039 BUTT
- W3339
- W3339 BUTT
- W3639
- W3639 BUTT
- W2442 BUTT
- W2742 (Butt)
- W3042
- W3042 BUTT
- W3342
- W3342 BUTT
- W3642
- W3642 BUTT

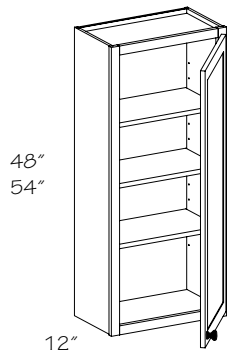
Color coding indicates new product, size or code

- Three adjustable shelves
- Any wall cabinet over 24" wide or 30" high with a depth greater than 12" and/or with butt doors must be installed between two (2) cabinets, a cabinet and a wall or supported from below
- 30-36" wide wall cabinets with BUTT doors have wood veneer plywood shelves

- PE
- APC
- APFC
- DE
- FPEB
- GD
- ID
- MI
- RD
- TWR
- XS
- XSG

Wall Single Door 48" and 54" H

(price book pg. D14)

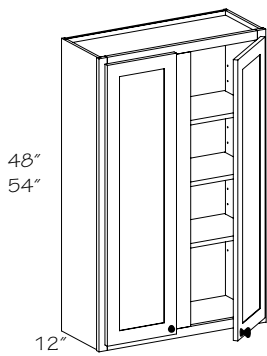


- Three shelves
- ※ W948 R or L
- W1248 R or L
- W1548 R or L
- W1848 R or L
- W2148 R or L
- W2448 R or L
- Four shelves
- ※ W954 R or L
- W1254 R or L
- W1554 R or L
- W1854 R or L
- W2154 R or L
- W2454 R or L

- ※ Doors are square except full overlay arch door styles. Evana Cathedral and Findlay Cathedral door styles will be square. Greenwich, Harlowe, Smithton and Vanderbilt doors will have a solid, recessed flat panel.

- Available in full overlay door styles only
- Any wall cabinet over 24" wide or 30" high with a depth greater than 12" and/or with butt doors must be installed between two (2) cabinets, a cabinet and a wall or supported from below
- Shelves shipped separately
- ☆ Maximum Increased Depth (ID) is 15"
- ☆ **Not** available with camed glass doors
- ☆ **Not** available with mullion glass doors
- ☆ Modern Frosted and Moire glass inserts **not** available on 54" H cabinets

- PE
- APC
- APFC
- DE
- FPEB
- ☆ GD
- ☆ ID
- MI
- RD
- TWR
- XS
- XSG



Wall Double Door 48" and 54" H

(price book pg. D16)

Three shelves

- W2448 BUTT**
- W2748 (Butt)**
- W3048**
- W3048 BUTT**
- W3348**
- W3348 BUTT**
- W3648**
- W3648 BUTT**

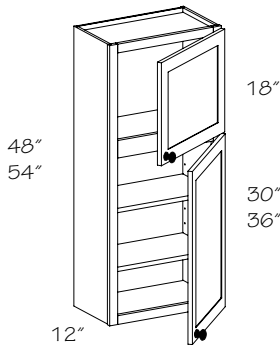
Four shelves

- W2454 BUTT**
- W2754 (Butt)**
- W3054**
- W3054 BUTT**
- W3354**
- W3354 BUTT**
- W3654**
- W3654 BUTT**

Color coding indicates new product, size or code

- Available in full overlay door styles only
- Any wall cabinet over 24" wide or 30" high with a depth greater than 12" and/or with butt doors must be installed between two (2) cabinets, a cabinet and a wall or supported from below
- Shelves shipped separately
- ☆ Maximum Increased Depth (ID) is 15"
- ☆ **Not** available with Mullion Strip Wall (MSW)
- ☆ **Not** available with camed glass doors
- ☆ **Not** available with mullion glass doors
- ☆ Modern Frosted and Moire glass inserts **not** available on 54" H cabinets

- PE
- APC
- APFC
- DE
- FPEB
- ☆ GD
- ☆ ID
- MI
- RD
- TWR
- XS
- XSG



Wall Stack Cabinet 48" and 54" H

(price book pg. D16)

Two shelves

- ※ **WST948 R or L**
- WST1248 R or L**
- WST1548 R or L**
- WST1848 R or L**
- WST2148 R or L**
- WST2448 R or L**
- WST2448 BUTT**
- WST2748 (Butt)**
- WST3048**
- WST3048 BUTT**
- WST3348**
- WST3348 BUTT**
- WST3648**
- WST3648 BUTT**

Three shelves

- ※ **WST954 R or L**
- WST1254 R or L**
- WST1554 R or L**
- WST1854 R or L**
- WST2154 R or L**
- WST2454 R or L**
- WST2454 BUTT**
- WST2754 (Butt)**
- WST3054**
- WST3054 BUTT**
- WST3354**
- WST3354 BUTT**
- WST3654**
- WST3654 BUTT**

- ※ Doors are square except full overlay arch door styles. Evana Cathedral and Findlay Cathedral door styles will be square. Greenwich, Harlowe, Smithton and Vanderbilt doors will have a solid, recessed flat panel.

Color coding indicates new product, size or code

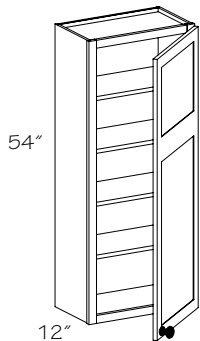
- Available in full overlay door styles only
- Any wall cabinet over 24" wide or 30" high with a depth greater than 12" and/or with butt doors must be installed between two (2) cabinets, a cabinet and a wall or supported from below
- Two vertical compartments with fixed rail and floor
- Bottom door is always square
- Shelves shipped separately
- ☆ Maximum Increased Depth (ID) is 15"
- **Not** available with Mullion Strip Wall (MSW)
- ☆ Glass doors available for top doors only
- ☆ To get glass on bottom door, order appropriate replacement door with glass option

- PE
- APC
- APFC
- DE
- FPEB
- ☆ GD
- ☆ ID
- MI
- RD
- TWR
- XS
- XSG

Wall Double Panel 54" H

(price book pg. D18)

- * **WDP954 R or L**
- WDP1254 R or L**
- WDP1554 R or L**
- WDP1854 R or L**
- WDP2154 R or L**
- WDP2454 R or L**
- WDP2454 BUTT**
- WDP2754 (Butt)**
- WDP3054**
- WDP3054 BUTT**
- WDP3354**
- WDP3354 BUTT**
- WDP3654**
- WDP3654 BUTT**



- * Doors are square except full overlay arch door styles. Evana Cathedral and Findlay Cathedral door styles will be square. Greenwich, Harlowe, Smithton and Vanderbilt doors will have a solid, recessed flat panel.

Color coding indicates new product, size or code

- Four adjustable shelves
- Available in full overlay door styles only
- Any wall cabinet over 24" wide or 30" high with a depth greater than 12" and/or with butt doors must be installed between two (2) cabinets, a cabinet and a wall or supported from below
- Shelves shipped separately
- ☆ Maximum Increased Depth (ID) is 15"
- **Not** available in mitered door styles
- **Not** available in slab door styles
- ☆ Glass doors available for top section only
- A solid raised center panel machined to match the veneer raised center panel will be supplied when glass doors are selected on Full Overlay veneer raised panel door styles
- ☆ **Not** available with mullion glass doors

● PE
● APC
● APFC
● DE
● FPEB
☆ GD
ID
● MI
● RD
TWR
● XS
● XSG

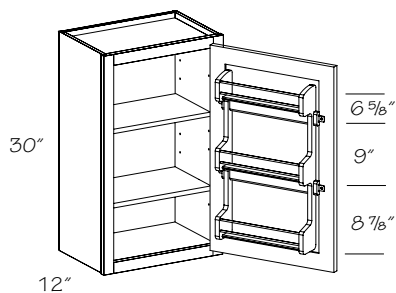
Wall Cabinet w/Spice Rack

(price book pg. D18)

Specify R or L

- W1530 R or L-SR**
- W1830 R or L-SR**
- W2130 R or L-SR**

- Right shown
- Two standard depth adjustable shelves
- Spice rack is 3 1/8" deep, rack shelf is 2 1/8" deep



● PE
● APC
● APFC
● DE
● FPEB
GD
● ID
● MI
● RD
● TWR
● XS
XSG

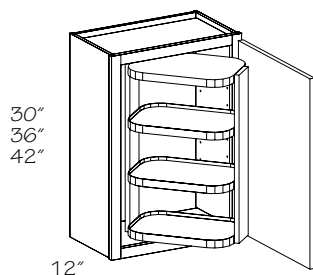
Wall Reverse-A-Shelf

(price book pg. D18)

Specify R or L
Three shelves

Shelf clearance top to bottom

- W2130 R or L-RS** 6 1/6" – 7 1/16" – 6 11/16"
- W2136 R or L-RS** 8 1/8" – 9 1/16" – 8 11/16"
- Four shelves
- W2142 R or L-RS** 7 3/16" – 8" – 8" – 7 5/8"



- Right shown
- Shelf assembly pivots 180° for full shelf access
- Vinyl laminated shelves with woodgrain T-molding
- **Note:** Cabinet is **not** reversible
- Contrasting Back Options (CBEB, CPLB, CVGR) **not** available



We recommend using Under Cabinet Panels (UCP) on all wall cabinet runs. This will give the kitchen an elegant finished look. Unless ordered with a matching wood veneer interior option, the under side of wall cabinets are a natural birch material.



● PE
● APC
● APFC
● DE
● FPEB
● GD
ID
MI
RD
TWR
● XS
XSG

Peninsula Wall Cabinets

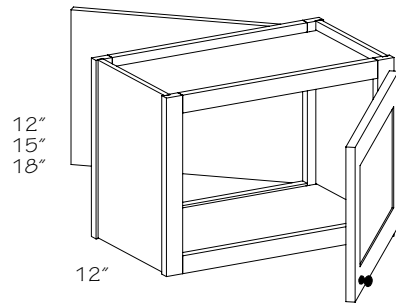
Construction Options and Modifications

- PE --- Plywood Ends
- APC --- All Plywood Construction
- APFC --- All Plywood Furniture Construction
- DE --- Integrated Decorative End
- FPEB --- Furniture Plywood Ends
- GD --- Glass Doors
- ID --- Increased Depth
- MI --- Matching Interior
- RD --- Reduced Depth
- TWR --- Top Wide Rail
- XS --- Extended Stile
- XSG --- Integrated Extended Stile

PW	33	30
code	width	height

When BUTT is in all capitals, it must be included as part of your ordering nomenclature. A (Butt) in parentheses is for your information and isn't required on an order form.
Material dimensions may be nominal based on lumber industry standards.

Specifications subject to change without notice.



Peninsula Wall Single Door 12", 15" and 18" H

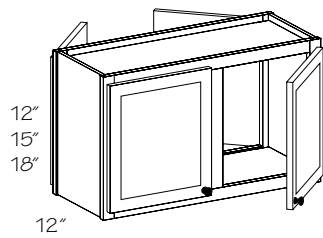
(price book pg. D18)

Specify R or L

- | | | |
|----------------------|----------------------|----------------------|
| PW1212 R or L | PW1518 R or L | PW2118 R or L |
| PW1512 R or L | PW1818 R or L | PW2118 R or L |
| PW1812 R or L | PW2118 R or L | |
| PW2112 R or L | | |
| PW1215 R or L | | |
| PW1515 R or L | | |
| PW1815 R or L | | |
| PW2115 R or L | | |

- No shelf
- Frame backs are *not* finished

- PE
- APC
- APFC
- DE
- FPEB
- GD
- ID
- MI
- RD
- TWR
- XS
- XSG



Peninsula Wall Double Door 12", 15" and 18" H

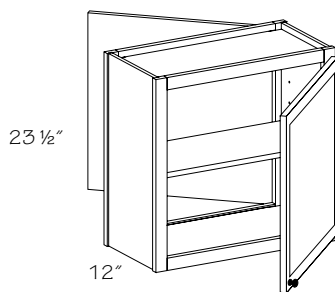
(price book pg. D20)

- | | | |
|----------------------|----------------------|----------------------|
| PW2412 BUTT | PW2415 BUTT | PW2418 BUTT |
| PW2712 (Butt) | PW2715 (Butt) | PW2718 (Butt) |
| PW3012 | PW3015 | PW3018 |
| PW3312 | PW3315 | PW3318 |
| PW3612 | PW3615 | PW3618 |
| PW3912 | PW3915 | PW3918 |
| * PW4812 | * PW4815 | * PW4818 |

- No shelf
- Frame backs are *not* finished
- Any wall cabinet over 24" wide or 30" high with a depth greater than 12" and/or with butt doors must be installed between two (2) cabinets, a cabinet and a wall or supported from below

- * Three door cabinet hinged left-left-right
- ☆ Glass door option *not* available

- PE
- APC
- APFC
- DE
- FPEB
- ☆ GD
- ID
- MI
- RD
- TWR
- XS
- XSG



Peninsula Wall Single Door 23 1/2" H

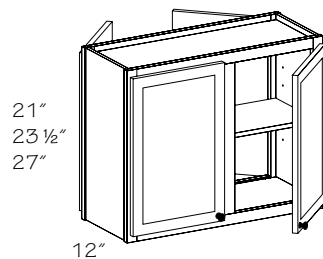
(price book pg. D20)

Specify R or L - Kitchen Side Hinging

- | |
|----------------------|
| PW1224 R or L |
| PW1524 R or L |
| PW1824 R or L |
| PW2124 R or L |
| PW2424 R or L |

- Right shown
- One adjustable shelf
- Frame backs are *not* finished

- PE
- APC
- APFC
- DE
- FPEB
- GD
- ID
- MI
- RD
- TWR
- XS
- XSG



Peninsula Wall Double Door 21", 23 1/2" and 27" H

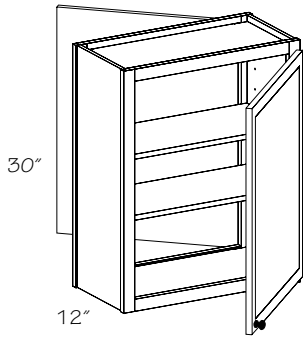
(price book pg. D22)

- | | |
|----------------------|--|
| PW3021 | ☆ PW3924 |
| PW3321 | ☆ PW4224 |
| PW3621 | ☆ PW4524 |
| PW2424 BUTT | ☆ PW4824 |
| PW2724 (Butt) | PW3027 |
| PW3024 | PW3327 |
| PW3324 | PW3627 |
| PW3624 | ☆ <i>Not available in Increased Depth (ID)</i> |

- One adjustable shelf
- Frame backs are *not* finished
- Any wall cabinet over 24" wide or 30" high with a depth greater than 12" and/or with butt doors must be installed between two (2) cabinets, a cabinet and a wall or supported from below

- PE
- APC
- APFC
- DE
- FPEB
- GD
- ☆ ID
- MI
- RD
- TWR
- XS
- XSG

Note: Peninsula wall cabinets must be installed against soffit, ceiling or supported by countertop.



Peninsula Wall Single Door 30" H

(price book pg. D22)

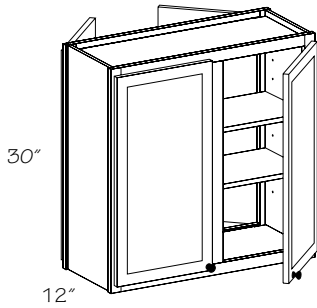
Specify R or L - Kitchen Side Hinging

- * **PW930 R or L**
- * **PW1230 R or L**
- * **PW1530 R or L**
- * **PW1830 R or L**
- * **PW2130 R or L**
- * **PW2430 R or L**

* Doors are square except full overlay arch door styles. Evana Cathedral and Findlay Cathedral door styles will be square. Greenwich, Harlowe, Smithton and Vanderbilt doors will have a solid, recessed flat panel.

- Right shown
- Two adjustable shelves
- Frame backs are **not** finished
- Any wall cabinet over 24" wide or 30" high with a depth greater than 12" and/or with butt doors must be installed between two (2) cabinets, a cabinet and a wall or supported from below

- PE
- APC
- APFC
- DE
- FPEB
- GD
- ID
- MI
- RD
- TWR
- XS
- XSG



Peninsula Wall Double Door 30" H

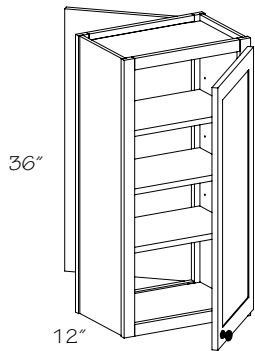
(price book pg. D22)

- * **PW2430 BUTT**
- * **PW2730 (Butt)**
- * **PW3030**
- * **PW3330**
- * **PW3630**
- ☆ **PW3930**
- ☆ **PW4230**
- ☆ **PW4530**
- ☆ **PW4830**

☆ **Not available in Increased Depth (ID)**

- Two adjustable shelves
- Frame backs are **not** finished
- Any wall cabinet over 24" wide or 30" high with a depth greater than 12" and/or with butt doors must be installed between two (2) cabinets, a cabinet and a wall or supported from below

- PE
- APC
- APFC
- DE
- FPEB
- GD
- ☆ ID
- MI
- RD
- TWR
- XS
- XSG



Peninsula Wall Single Door 36" H

(price book pg. D22)

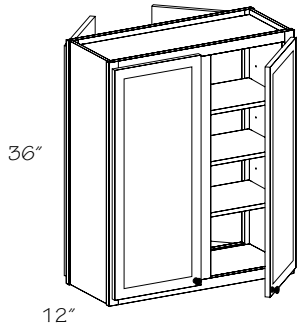
Specify R or L

- * **PW936 R or L**
- * **PW1236 R or L**
- * **PW1536 R or L**
- * **PW1836 R or L**
- * **PW2136 R or L**
- * **PW2436 R or L**

* Doors are square except full overlay arch door styles. Evana Cathedral and Findlay Cathedral door styles will be square. Greenwich, Harlowe, Smithton, and Vanderbilt doors will have a solid, recessed flat panel. Courtney doors will have a veneer, recessed flat panel.

- Three adjustable shelves
- Frame backs are **not** finished
- Any wall cabinet over 24" wide or 30" high with a depth greater than 12" and/or with butt doors must be installed between two (2) cabinets, a cabinet and a wall or supported from below

- PE
- APC
- APFC
- DE
- FPEB
- GD
- ID
- MI
- RD
- TWR
- XS
- XSG



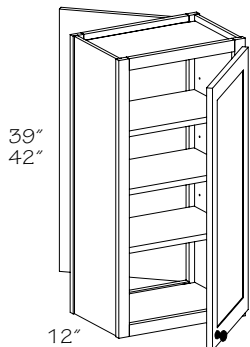
Peninsula Wall Double Door 36" H

(price book pg. D24)

- * **PW2436 BUTT**
- * **PW2736 (Butt)**
- * **PW3036**
- * **PW3336**
- * **PW3636**

- Three adjustable shelves
- Any wall cabinet over 24" wide or 30" high with a depth greater than 12" and/or with butt doors must be installed between two (2) cabinets, a cabinet and a wall or supported from below
- Frame backs are **not** finished

- PE
- APC
- APFC
- DE
- FPEB
- GD
- ID
- MI
- RD
- TWR
- XS
- XSG



Peninsula Wall Single Door 39" and 42" H

(price book pg. D24)

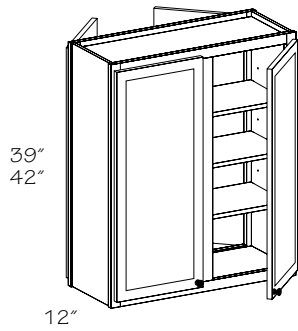
- * **PW939 R or L**
- * **PW1239 R or L**
- * **PW1539 R or L**
- * **PW1839 R or L**
- * **PW2139 R or L**
- * **PW2439 R or L**
- * **PW942 R or L**
- * **PW1242 R or L**
- * **PW1542 R or L**
- * **PW1842 R or L**
- * **PW2142 R or L**
- * **PW2442 R or L**

* Doors are square except full overlay arch door styles. Evana Cathedral and Findlay Cathedral door styles will be square. Greenwich, Harlowe, Smithton and Vanderbilt doors will have a solid, recessed flat panel.

- Three adjustable shelves
- Frame backs are **not** finished
- Any wall cabinet over 24" wide or 30" high with a depth greater than 12" and/or with butt doors must be installed between two (2) cabinets, a cabinet and a wall or supported from below

- PE
- APC
- APFC
- DE
- FPEB
- GD
- ID
- MI
- RD
- TWR
- XS
- XSG

Note: Peninsula wall cabinets must be installed against soffit, ceiling or supported by countertop.



Peninsula Wall Double Door 39" and 42" H

(price book pg. D24)

PW2439 BUTT

PW2739 (Butt)

PW3039

PW3339

PW3639

PW2442 BUTT

PW2742 (Butt)

PW3042

PW3342

PW3642

- Three adjustable shelves
- Any wall cabinet over 24" wide or 30" high with a depth greater than 12" and/or with butt doors must be installed between two (2) cabinets, a cabinet and a wall or supported from below
- Frame backs are *not* finished

●	PE
●	APC
●	APFC
●	DE
●	FPEB
●	GD
●	ID
●	MI
●	RD
	TWR
●	XS
	XSG

Note: Peninsula wall cabinets must be installed against soffit, ceiling or supported by countertop.