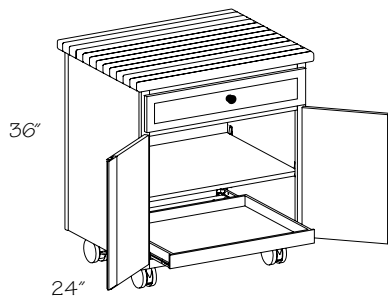


Base Island

Construction Options and Modifications

- PE --- Plywood Ends
- APC --- All Plywood Construction
- APFC --- All Plywood Furniture Construction
- GD --- Glass Doors
- IF --- Inverted Frame
- MI --- Matching Interior
- RTK --- Recessed Toe Kick
- TWR --- Top Wide Rail
- VTK --- Void Toe Kick

CBT	36	24	•CL	•VT
code	width	depth	leg style	void top option



Floating Island Base

(price book pg. E50)

- FIB24 BUTT**
- * **FIB30**
- FIB30 BUTT**
- * **FIB36**
- FIB36 BUTT**
- * **FIB36 •2D**

- Void Top*
- FIB24 BUTT-VT**
 - * **FIB30 •VT**
 - FIB30 BUTT-VT**
 - * **FIB36 •VT**
 - FIB36 BUTT-VT**
 - * **FIB36 •2D-VT**

* A mullion strip is attached to the left door

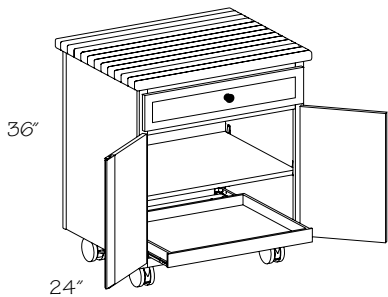
Color coding indicates new product, size or code

- Top surface is 1 1/2" thick Maple chopping block and extends 1" beyond cabinet—**not** including doors and drawers
- Back is matching wood veneer or laminate
- One full-depth adjustable shelf
- One standard full-width Roll-out Tray (ROT)
- Outside Corner Molding at back corners
- Cutting Board Finish (CBF) is recommended for top; see Touch-up section of this book
- Void top option allows for field installation of a decorative top
- Field applied top **not** to exceed 100 pounds
- **Note:** Top shipped separately
- **Not** available in Morristown; Melrose and Brockton are plain sawn wood
- Contrasting Back Options (CBEB, CPLB, CVGR) **not** available
- Back Options (BEB and VGRB) **not** available



Note: It is recommended not to exceed 100 pounds when applying a customer supplied top on Floating Island Base cabinets.

●	PE
◆	APC
◆	APFC
●	GD
●	IF
●	MI
●	RTK
●	TWR
●	VTK



Floating Island Base Mission

(price book pg. E50)

- FIB24 BUTT•M**
- * **FIB30 •M**
- FIB30 BUTT•M**
- * **FIB36 •M**
- FIB36 BUTT•M**
- * **FIB36 •2D•M**

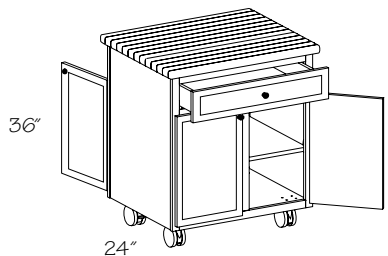
- Void Top*
- FIB24 BUTT•M-VT**
 - * **FIB30 •M-VT**
 - FIB30 BUTT•M-VT**
 - * **FIB36 •M-VT**
 - FIB36 BUTT•M-VT**
 - * **FIB36 •2D•M-VT**

* A mullion strip is attached to the left door

Color coding indicates new product, size or code

- Top surface is 1 1/2" thick Maple chopping block and extends 1" beyond cabinet—**not** including doors and drawers
- Back is matching wood veneer
- End panels are quartersawn
- One full-depth adjustable shelf
- One standard full-width Roll-out Tray (ROT)
- Quartersawn outside corner molding at back corners
- Cutting Board Finish (CBF) is recommended for top; see Touch-up section of this book
- Void top option allows for field installation of a decorative top
- Field applied top **not** to exceed 100 pounds
- Available in quartersawn oak door styles only
- **Note:** Top shipped separately
- Contrasting Back Options (CBEB, CPLB, CVGR) **not** available
- Back Options (BEB and VGRB) **not** available

●	PE
◆	APC
◆	APFC
●	GD
●	IF
●	MI
●	RTK
●	TWR
●	VTK



Peninsula Floating Island Base

(price book pg. E52)

- PFIB24 BUTT**
- * **PFIB30**
- PFIB30 BUTT**
- * **PFIB36**
- PFIB36 BUTT**
- * **PFIB36 •2D**

- Void Top*
- PFIB24 BUTT-VT**
 - * **PFIB30 •VT**
 - PFIB30 BUTT-VT**
 - * **PFIB36 •VT**
 - PFIB36 BUTT-VT**
 - * **PFIB36 •2D-VT**

* A mullion strip is attached to the left door

Color coding indicates new product, size or code

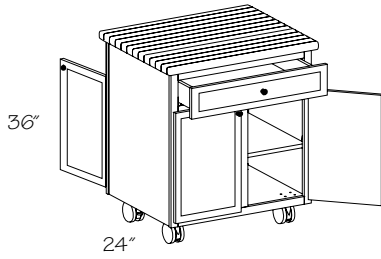
- Top surface is 1 1/2" thick Maple chopping block and extends 1" beyond cabinet—**not** including doors and drawers
- One full-depth adjustable shelf
- False drawer front on peninsula side
- Cutting Board Finish (CBF) is recommended for top; see Touch-up section of this book
- Void top option allows for field installation of a decorative top
- Field applied top **not** to exceed 100 pounds
- **Note:** Top shipped separately
- **Not** available in Morristown; Melrose and Brockton are plain sawn wood

●	PE
◆	APC
◆	APFC
●	GD
●	IF
●	MI
●	RTK
●	TWR
●	VTK



Peninsula Floating Island Base Mission

(price book pg. E52)



- PFIB24 BUTT-M
- * PFIB30 -M
- PFIB30 BUTT-M
- * PFIB36 -M
- PFIB36 BUTT-M
- * PFIB36 -2D-M

Void Top

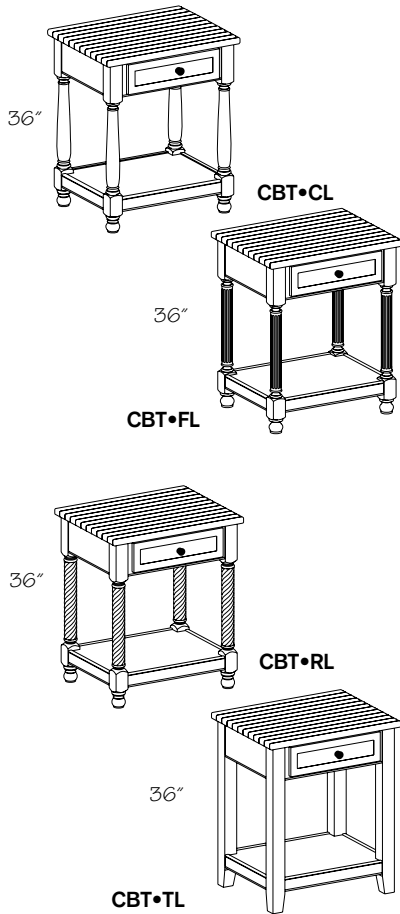
- PFIB24 BUTT-M-VT
- * PFIB30 -M-VT
- PFIB30 BUTT-M-VT
- * PFIB36 -M-VT
- PFIB36 BUTT-M-VT
- * PFIB36 -2D-M-VT
- * A mullion strip is attached to the left door

Color coding indicates new product, size or code

- Top surface is 1 1/2" thick Maple chopping block and extends 1" beyond cabinet—**not** including doors and drawers
- End panels are quartersawn
- One full-depth adjustable shelf
- False drawer front on peninsula side
- Cutting Board Finish (CBF) is recommended for top; see Touch-up section of this book
- Void top option allows for field installation of a decorative top
- Field applied top **not** to exceed 100 pounds
- Available in quartersawn oak door styles only
- **Note:** Top shipped separately

Chopping Block Table

(price book pg. E54)



- Classic Leg
- CBT2424 -CL
 - CBT3024 -CL
 - CBT3624 -CL
 - * CBT4224 -CL
 - CBT3630 -CL

- Classic Leg - Void Top
- CBT2424 -CL-VT
 - CBT3024 -CL-VT
 - CBT3624 -CL-VT
 - * CBT4224 -CL-VT
 - CBT3630 -CL-VT

- Fluted Leg
- CBT2424 -FL
 - CBT3024 -FL
 - CBT3624 -FL
 - * CBT4224 -FL
 - CBT3630 -FL

- Fluted Leg - Void Top
- CBT2424 -FL-VT
 - CBT3024 -FL-VT
 - CBT3624 -FL-VT
 - * CBT4224 -FL-VT
 - CBT3630 -FL-VT

- Rope Leg
- CBT2424 -RL
 - CBT3024 -RL
 - CBT3624 -RL
 - * CBT4224 -RL
 - CBT3630 -RL

- Rope Leg - Void Top
- CBT2424 -RL-VT
 - CBT3024 -RL-VT
 - CBT3624 -RL-VT
 - * CBT4224 -RL-VT
 - CBT3630 -RL-VT

- Tapered Leg
- CBT2424 -TL
 - CBT3024 -TL
 - CBT3624 -TL
 - * CBT4224 -TL
 - CBT3630 -TL

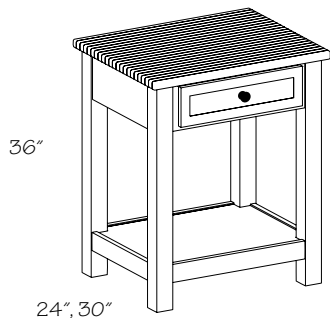
- Tapered Leg - Void Top
- CBT2424 -TL-VT
 - CBT3024 -TL-VT
 - CBT3624 -TL-VT
 - * CBT4224 -TL-VT
 - CBT3630 -TL-VT

* Two drawers

- Solid wood
- Laminates are painted hardwood
- Top surface is 1 1/4" thick Maple chopping block
- Available in Birch, Cherry, Maple and Oak only
- Oak supplied for Hickory
- Void top option allows for field installation of a decorative top
- Cutting Board Finish (CBF) is recommended for top; see Touch-up section of this book
- **Not** available in Morristown; Melrose and Brockton are plain sawn wood

Chopping Block Table Mission

(price book pg. E56)



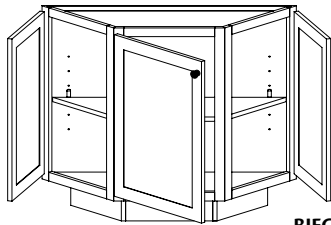
- CBT2424 -M
- CBT3024 -M
- CBT3624 -M
- * CBT4224 -M
- CBT3630 -M

Void Top

- CBT2424 -M-VT
- CBT3024 -M-VT
- CBT3624 -M-VT
- * CBT4224 -M-VT
- CBT3630 -M-VT

* Two drawers

- Quartersawn solid wood
- Top surface is 1 1/4" thick Maple chopping block
- Void top option allows for field installation of a decorative top
- Cutting Board Finish (CBF) is recommended for top; see Touch-up section of this book
- Available in quartersawn oak door styles only



BIEC36-48

Island End Cabinet

(price book pg. E56)

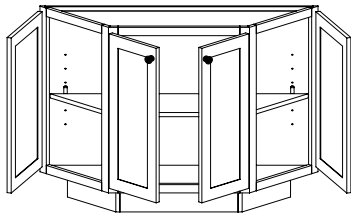
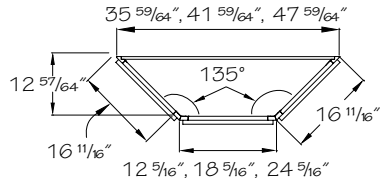
BIEC36 R or L

BIEC42 R or L

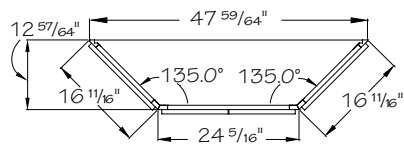
BIEC48 R or L

BIEC48 BUTT

- One adjustable, full-depth shelf
- Must get all doors with glass when glass option is chosen



BIEC48 BUTT



Remember, when designing with a BIEC36, the center door is 12" (nominal). Since several door inserts are not available on doors narrower than 18" wide, please consult the specifications for your desired glass option. If you require glass on just the right and left door, you can order replacement doors for those positions with a glass option

●	PE
●	APC
●	APFC
●	GD
●	IF
●	MI
◆	RTK
●	TWR
●	VTK

New

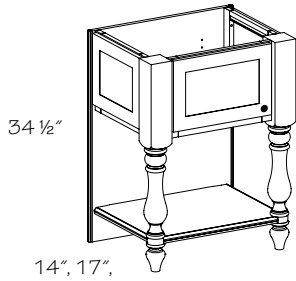
Island End Cap with Doors

(price book pg. E58, E60)

Classic Leg

- IECDO2614 R or L-CLS
- IECDO3814 -CLS
- IECDO4114 -CLS
- IECDO4414 -CLS
- * IECDO5014 -CLS
- IECDO2617 R or L-CLS
- IECDO3817 -CLS
- IECDO4117 -CLS
- IECDO4417 -CLS
- * IECDO5017 -CLS
- IECDO2620 R or L-CLS
- IECDO3820 -CLS
- IECDO4120 -CLS
- IECDO4420 -CLS

IECDO26



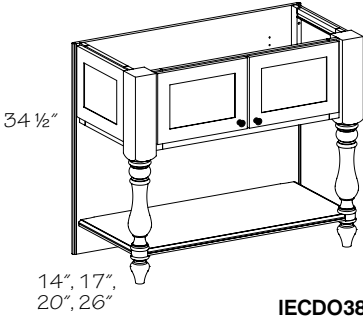
34 1/2"

14", 17",
20", 26"

IECDO26

- * IECDO5020 -CLS
- IECDO2626 R or L-CLS
- IECDO3826 -CLS
- IECDO4126 -CLS
- IECDO4426 -CLS
- * IECDO5026 -CLS

IECDO38-50

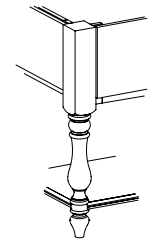


34 1/2"

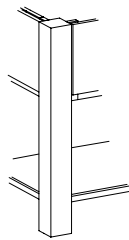
14", 17",
20", 26"

Plain Square Post

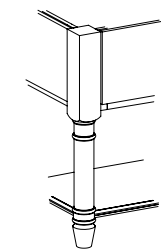
- IECDO2614 R or L-PSP
- IECDO3814 -PSP
- IECDO4114 -PSP
- IECDO4414 -PSP
- * IECDO5014 -PSP
- IECDO2617 R or L-PSP
- IECDO3817 -PSP
- IECDO4117 -PSP
- IECDO4417 -PSP
- * IECDO5017 -PSP
- IECDO2620 R or L-PSP
- IECDO3820 -PSP
- IECDO4120 -PSP
- IECDO4420 -PSP
- * IECDO5020 -PSP
- IECDO2626 R or L-PSP
- IECDO3826 -PSP
- IECDO4126 -PSP
- IECDO4426 -PSP
- * IECDO5026 -PSP



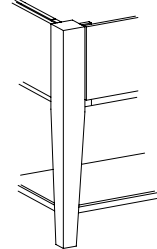
CLS



PSP



RSP



TPL

Roman Spindle

- IECDO2614 R or L-RSP
- IECDO3814 -RSP
- IECDO4114 -RSP
- IECDO4414 -RSP
- * IECDO5014 -RSP
- IECDO2617 R or L-RSP
- IECDO3817 -RSP
- IECDO4117 -RSP
- IECDO4417 -RSP
- * IECDO5017 -RSP
- IECDO2620 R or L-RSP
- IECDO3820 -RSP
- IECDO4120 -RSP
- IECDO4420 -RSP
- * IECDO5020 -RSP
- IECDO2626 R or L-RSP
- IECDO3826 -RSP
- IECDO4126 -RSP
- IECDO4426 -RSP
- * IECDO5026 -RSP

Tapered Leg

- IECDO2614 R or L-TPL
- IECDO3814 -TPL
- IECDO4114 -TPL
- IECDO4414 -TPL
- * IECDO5014 -TPL
- IECDO2617 R or L-TPL
- IECDO3817 -TPL
- IECDO4117 -TPL
- IECDO4417 -TPL
- * IECDO5017 -TPL
- IECDO2620 R or L-TPL
- IECDO3820 -TPL
- IECDO4120 -TPL
- IECDO4420 -TPL
- * IECDO5020 -TPL
- IECDO2626 R or L-TPL
- IECDO3826 -TPL
- IECDO4126 -TPL
- IECDO4426 -TPL
- * IECDO5026 -TPL

* Beaded Back Option (IECBEB) **not** available

Color coding indicates new product, size or code

PE
APC
❖ APFC
GD
IF
❖ MI
RTK
TWR
VTK

- Available in Cherry, Laminate and Maple door styles only
- Laminates are painted hardwood
- Backs of Island End Caps are finished both sides
- When Beaded (BEB) or V-Groove (VGRB) Back Options are selected, the opposite side will be finished plain wood veneer
- Contrasting Back Options (CBEB, CPLB, CVGR) **not** available

New

Island End Cap with Drawers

(price book pg. E62, E64)

Classic Leg

- IECDW2614 -CLS
- IECDW3814 -CLS
- IECDW4114 -CLS
- IECDW4414 -CLS
- IECDW4414 -CLS
- * IECDW5014 -CLS
- IECDW2617 -CLS
- IECDW3817 -CLS
- IECDW4117 -CLS
- IECDW4417 -CLS
- IECDW4417 -CLS
- * IECDW5017 -CLS
- IECDW2620 -CLS
- IECDW3820 -CLS
- IECDW4120 -CLS
- IECDW4420 -CLS
- * IECDW5020 -CLS
- IECDW2626 -CLS
- IECDW3826 -CLS
- IECDW4126 -CLS
- IECDW4426 -CLS
- * IECDW5026 -CLS

Plain Square Post

- IECDW2614 -PSP
- IECDW3814 -PSP
- IECDW4114 -PSP
- IECDW4414 -PSP
- * IECDW5014 -PSP
- IECDW2617 -PSP
- IECDW3817 -PSP
- IECDW4117 -PSP
- IECDW4417 -PSP
- IECDW4417 -PSP
- * IECDW5017 -PSP
- IECDW2620 -PSP
- IECDW3820 -PSP
- IECDW4120 -PSP
- IECDW4420 -PSP
- IECDW4420 -PSP
- * IECDW5020 -PSP
- IECDW2626 -PSP
- IECDW3826 -PSP
- IECDW4126 -PSP
- IECDW4426 -PSP
- * IECDW5026 -PSP

Roman Spindle

- IECDW2614 -RSP
- IECDW3814 -RSP
- IECDW4114 -RSP
- IECDW4414 -RSP
- IECDW4414 -RSP
- * IECDW5014 -RSP
- IECDW2617 -RSP
- IECDW3817 -RSP
- IECDW4117 -RSP
- IECDW4417 -RSP
- IECDW4417 -RSP
- * IECDW5017 -RSP
- IECDW2620 -RSP
- IECDW3820 -RSP
- IECDW4120 -RSP
- IECDW4420 -RSP
- * IECDW5020 -RSP
- IECDW2626 -RSP
- IECDW3826 -RSP
- IECDW4126 -RSP
- IECDW4426 -RSP
- * IECDW5026 -RSP

Tapered Leg

- IECDW2614 -TPL
- IECDW3814 -TPL
- IECDW4114 -TPL
- IECDW4414 -TPL
- * IECDW5014 -TPL
- IECDW2617 -TPL
- IECDW3817 -TPL
- IECDW4117 -TPL
- IECDW4417 -TPL
- IECDW4417 -TPL
- * IECDW5017 -TPL
- IECDW2620 -TPL
- IECDW3820 -TPL
- IECDW4120 -TPL
- IECDW4420 -TPL
- IECDW4420 -TPL
- * IECDW5020 -TPL
- IECDW2626 -TPL
- IECDW3826 -TPL
- IECDW4126 -TPL
- IECDW4426 -TPL
- * IECDW5026 -TPL

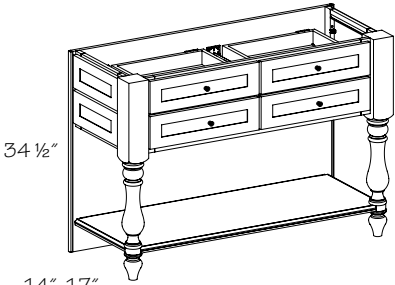
* Beaded Back Option (IECBEB) **not** available

Color coding indicates new product, size or code

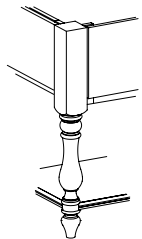
PE
APC
❖ APFC
GD
IF
❖ MI
RTK
TWR
VTK



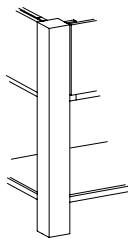
IECDW26-44



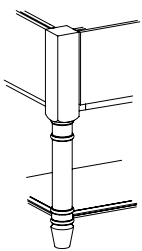
IECDW50



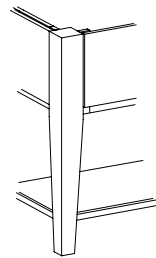
CLS



PSP



RSP



TPL

- Available in Cherry, Laminate and Maple door styles only
- Backs of Island End Caps are finished both sides
- Laminates are painted hardwood
- When Beaded (BEB) or V-Groove (VGRB) Back Options are selected, the opposite side will be finished plain wood veneer
- Contrasting Back Options (CBEB, CPLB, CVGR) **not** available

New

Island End Cap Open with False Doors

(price book pg. E66)

Classic Leg

- IECFDO2604 -CLS
- IECFDO3804 -CLS
- IECFDO4104 -CLS
- IECFDO4404 -CLS
- * IECFDO5004 -CLS

Plain Square Post

- IECFDO2604 .PSP
- IECFDO3804 .PSP
- IECFDO4104 .PSP
- IECFDO4404 .PSP
- * IECFDO5004 .PSP

Roman Spindle Post

- IECFDO2604 .RSP
- IECFDO3804 .RSP
- IECFDO4104 .RSP
- IECFDO4404 .RSP
- * IECFDO5004 .RSP

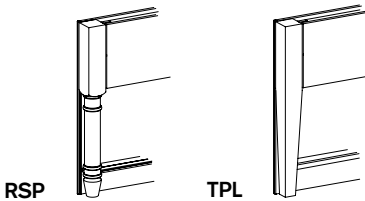
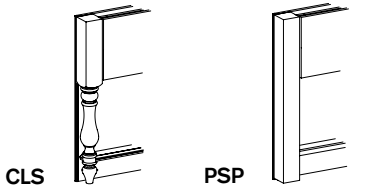
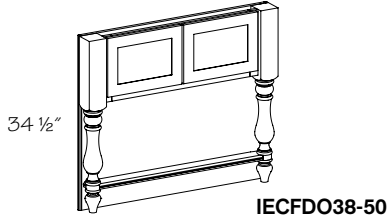
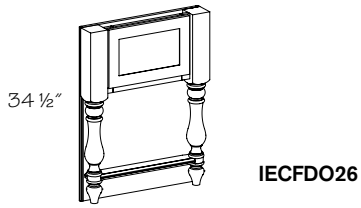
Tapered Leg

- IECFDO2604 .TPL
- IECFDO3804 .TPL
- IECFDO4104 .TPL
- IECFDO4404 .TPL
- * IECFDO5004 .TPL
- * Beaded Back Option (IECBEB) **not** available

Color coding indicates new product, size or code

- Available in Cherry, Laminate and Maple door styles only
- Laminates are painted hardwood
- Backs of Island End Caps are finished both sides
- When Beaded (BEB) or V-Groove (VGRB) Back Options are selected, the opposite side will be finished plain wood veneer
- Contrasting Back Options (CBEB, CPLB, CVGR) **not** available

PE
APC
❖ APFC
GD
IF
❖ MI
RTK
TWR
VTK



New

Island End Cap Open with False Drawers

(price book pg. E66)

Classic Leg

- IECFDW2604 -CLS
- IECFDW3804 -CLS
- IECFDW4104 -CLS
- IECFDW4404 -CLS

* IECFDW5004 -CLS

Plain Square Post

- IECFDW2604 -PSP
- IECFDW3804 -PSP
- IECFDW4104 -PSP
- IECFDW4404 -PSP

* IECFDW5004 -PSP

Roman Spindle

- IECFDW2604 -RSP
- IECFDW3804 -RSP
- IECFDW4104 -RSP
- IECFDW4404 -RSP

* IECFDW5004 -RSP

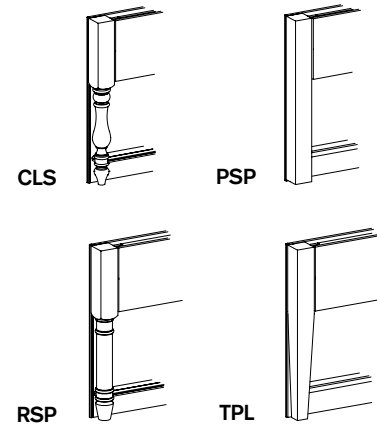
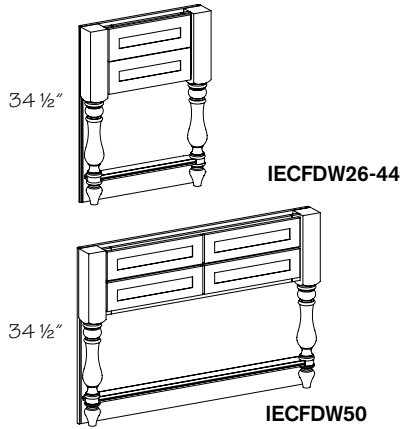
Tapered Leg

- IECFDW2604 -TPL
- IECFDW3804 -TPL
- IECFDW4104 -TPL
- IECFDW4404 -TPL

* IECFDW5004 -TPL

* Beaded Back Option (IECBEB) **not** available

Color coding indicates new product, size or code



- Available in Cherry, Laminate and Maple door styles only
- Laminates are painted hardwood
- Contrasting Back Options (CBEB, CPLB, CVGR) **not** available

PE
APC
❖ APFC
GD
IF
❖ MI
RTK
TWR
VTK